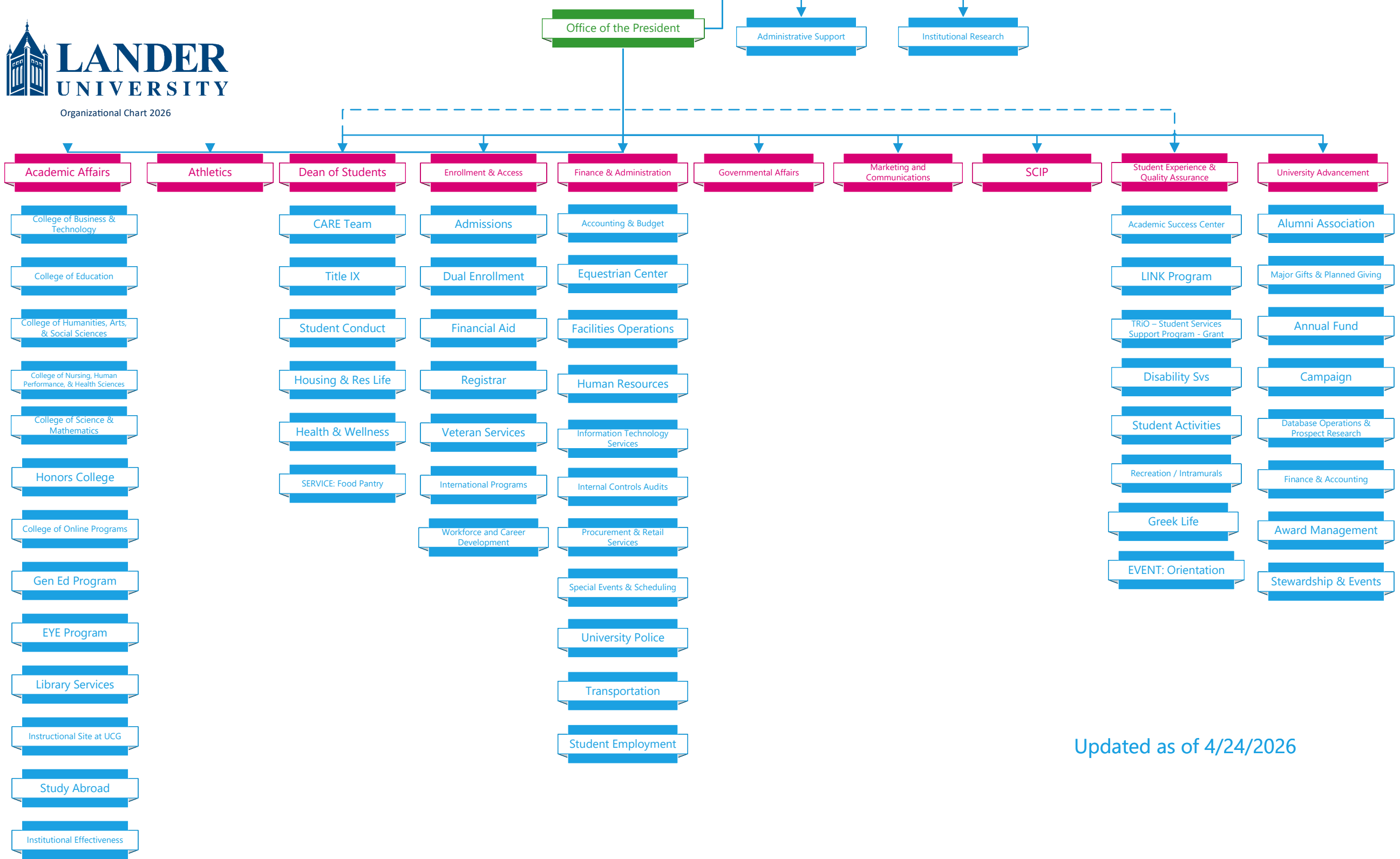
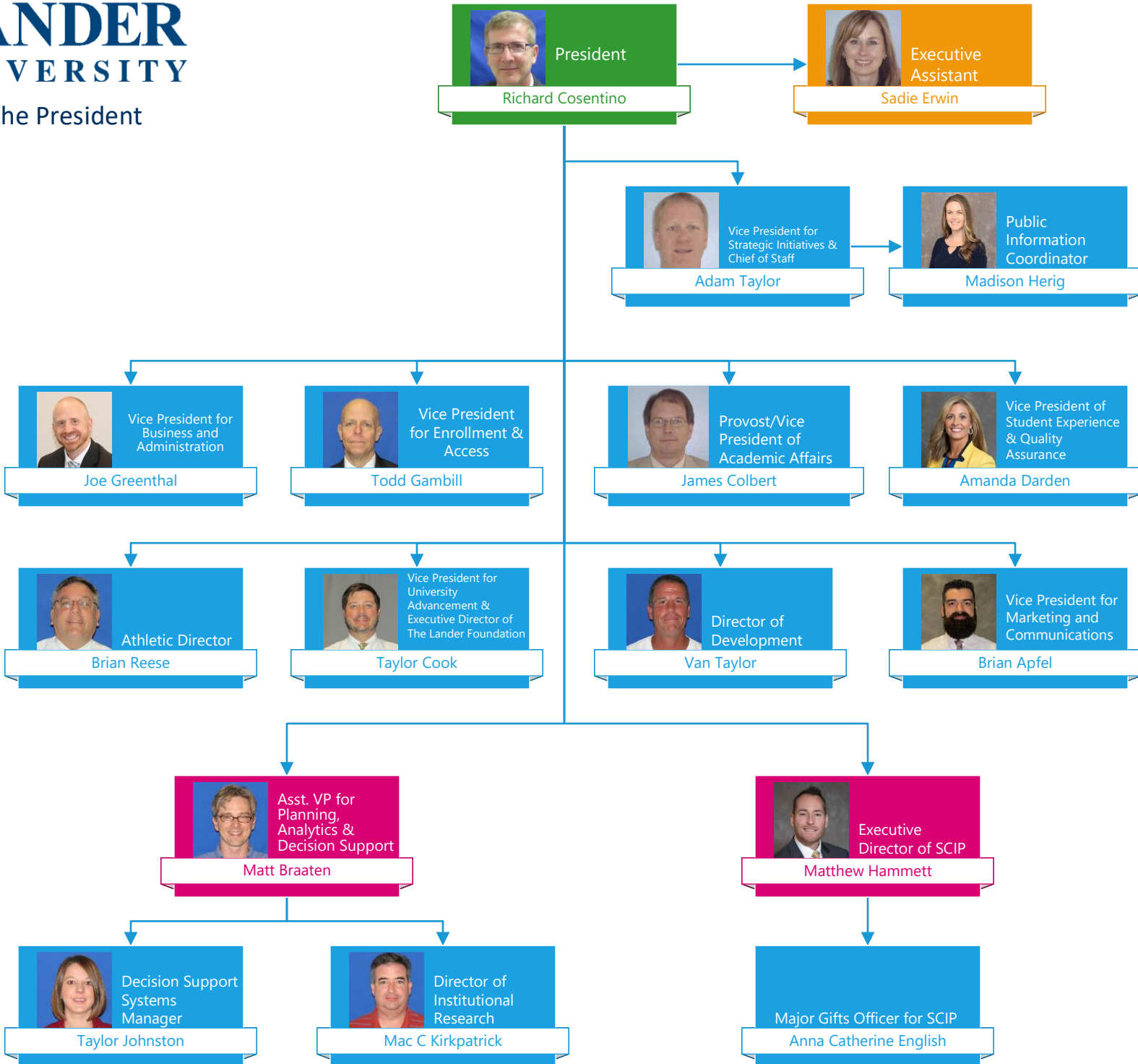




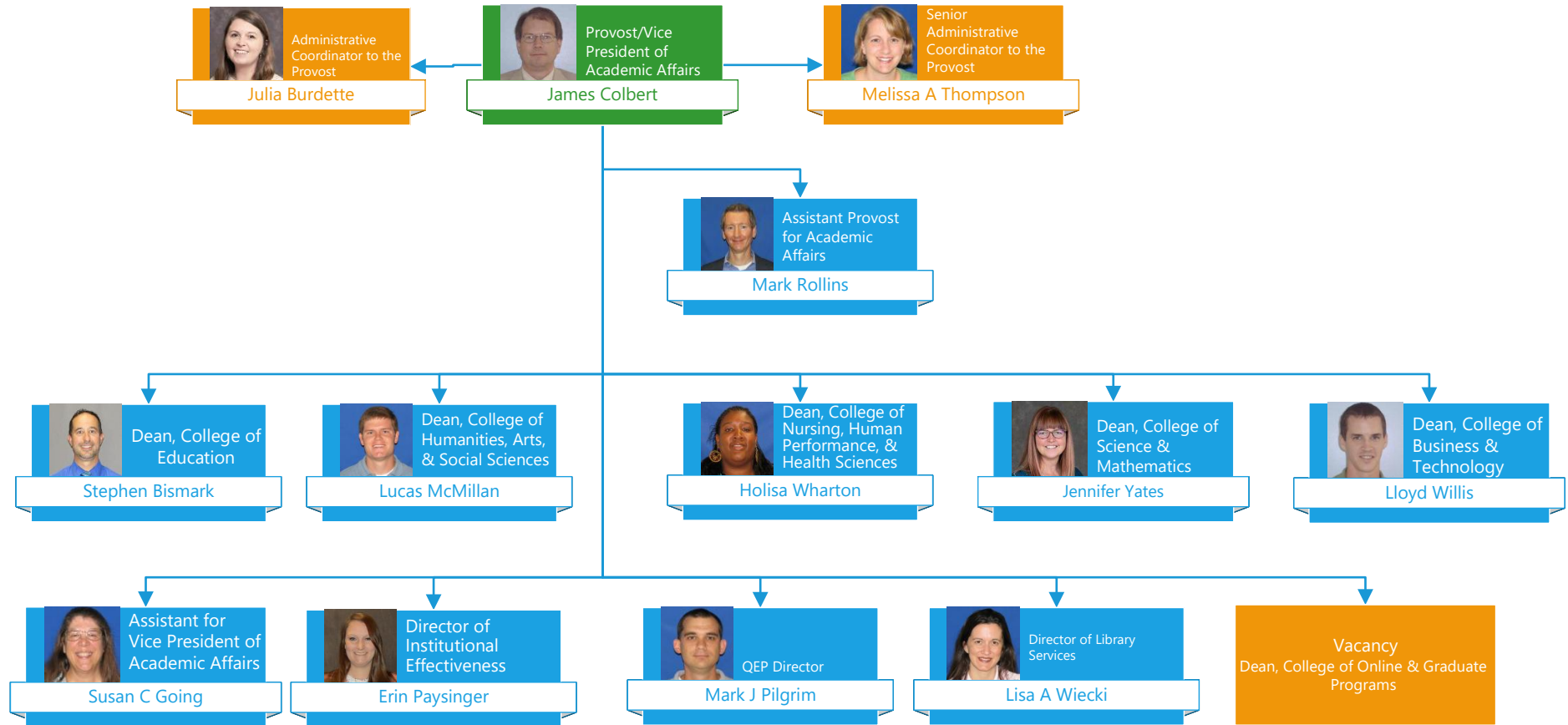
Organizational Chart 2026



Updated as of 4/24/2026



## Vice President for Academic Affairs





Vice President for Academic Affairs  
 College of Business & Technology  
 School of Business

 Provost/Vice President of Academic Affairs  
 James Colbert

 Interim Dean, College of Business & Technology  
 Lloyd Willis

 Dean's Administrative Assistant  
 Vanessa Jennings

 Administrative Assistant  
 Jamie Enlow


 Associate Dean & Assistant Professor  
 Michael Houston

 Associate Dean of Business & Technology/  
 Professor  
 Gail D Moore

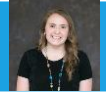
 Assistant Professor  
 Abdul-Aziz Bahha

 Associate Professor  
 David Egleston


 Professor & Faculty Athletics Representative  
 David Zinn

 Lecturer  
 David L. Bell

 Teaching Assistant Professor  
 Joshua Mitchell

 Lecturer  
 Abby Pilgrim

 Assistant Professor  
 Kara McAlister

 Associate Professor  
 Kelli Horne

 Assistant Professor  
 Macy Scheck

 Lecturer/Director of Online Programs & Professional Development  
 MaryKate Leggieri

 Associate Professor  
 Matthew Peters

 Professor  
 Mike Shurden

 Lecturer  
 Lisa Wyn

 Associate Professor  
 Susan Shurden

 Lecturer  
 Tracy McCurry

 Teaching Assistant Professor  
 Fubin Cong

 Assistant Professor  
 Francesca Dunlevy

 Assistant Professor  
 Jason Richburg



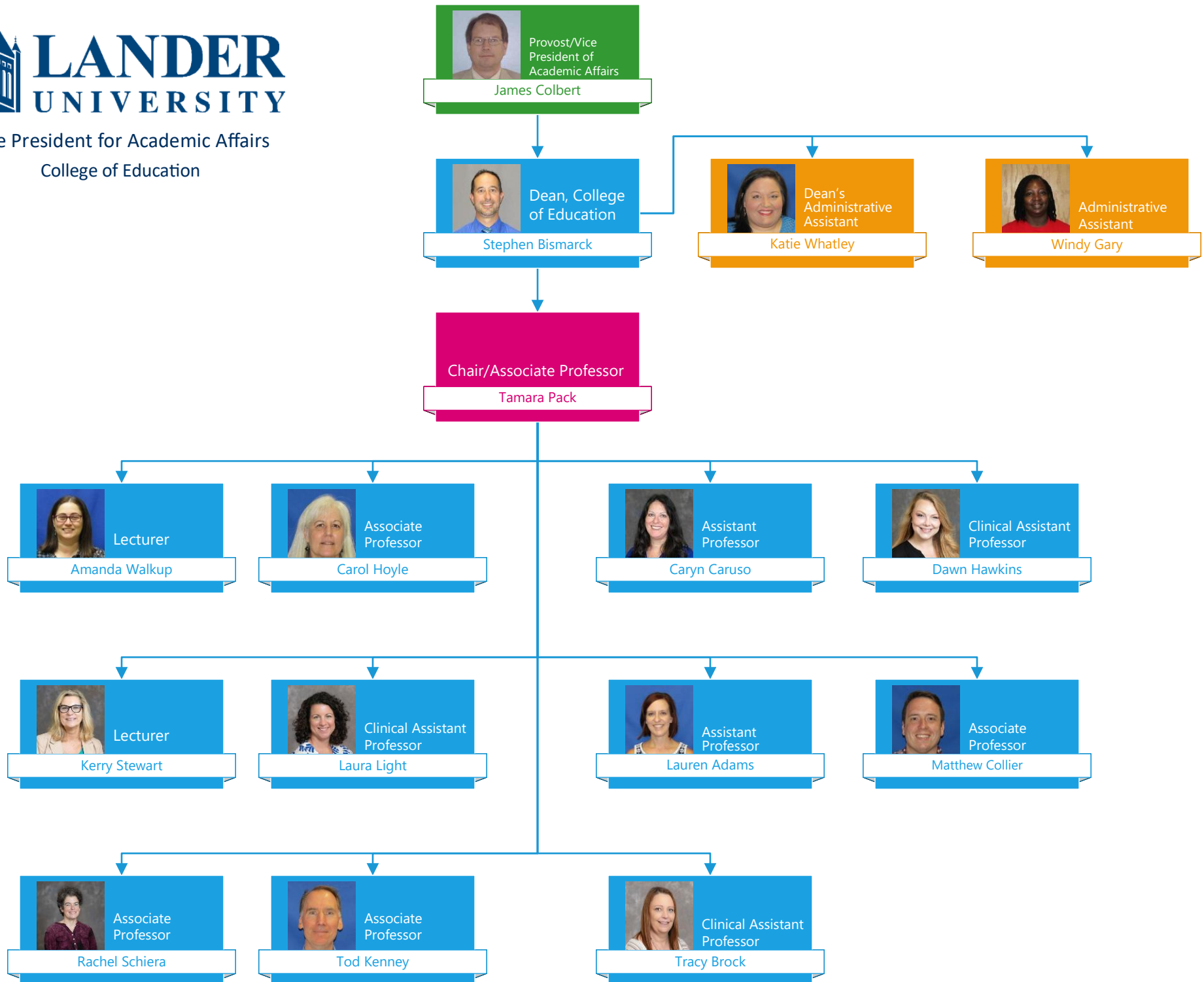
Vice President for Academic Affairs  
College of Business & Technology  
Applied Computing and Media & Design





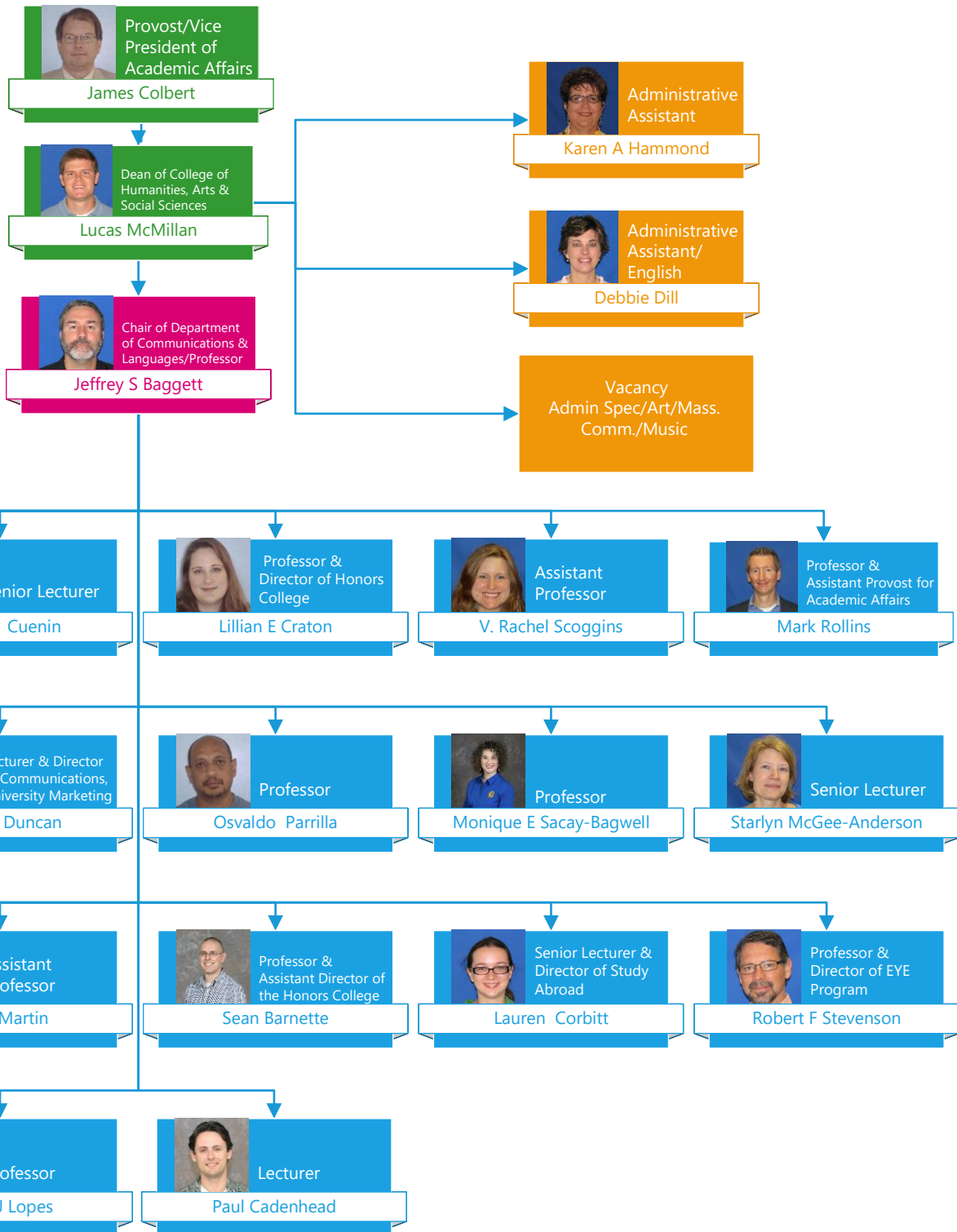
**LANDER  
UNIVERSITY**

Vice President for Academic Affairs  
College of Education



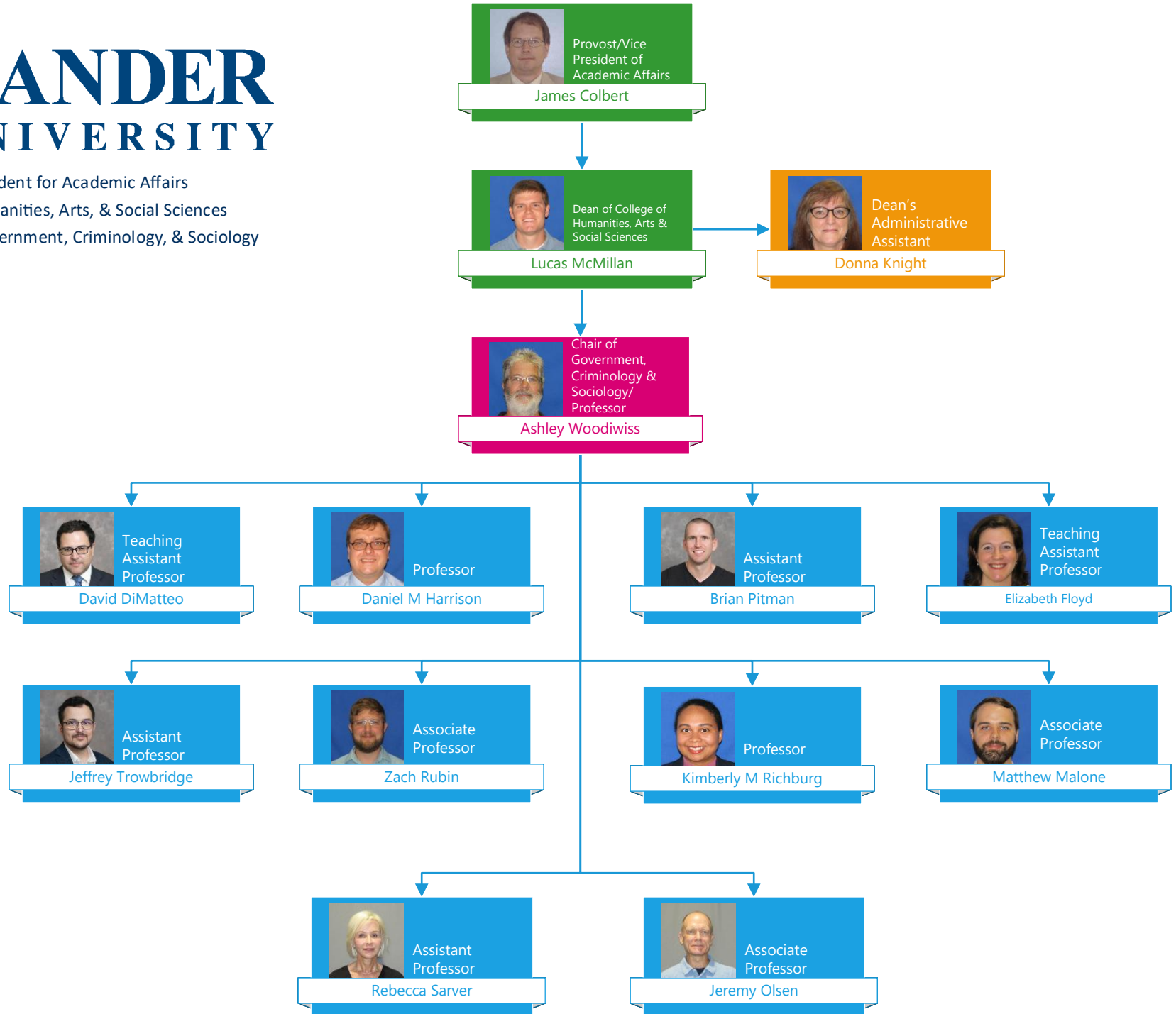


Vice President for Academic Affairs  
 College of Humanities, Arts, & Social Sciences  
 Department of Communication & Languages



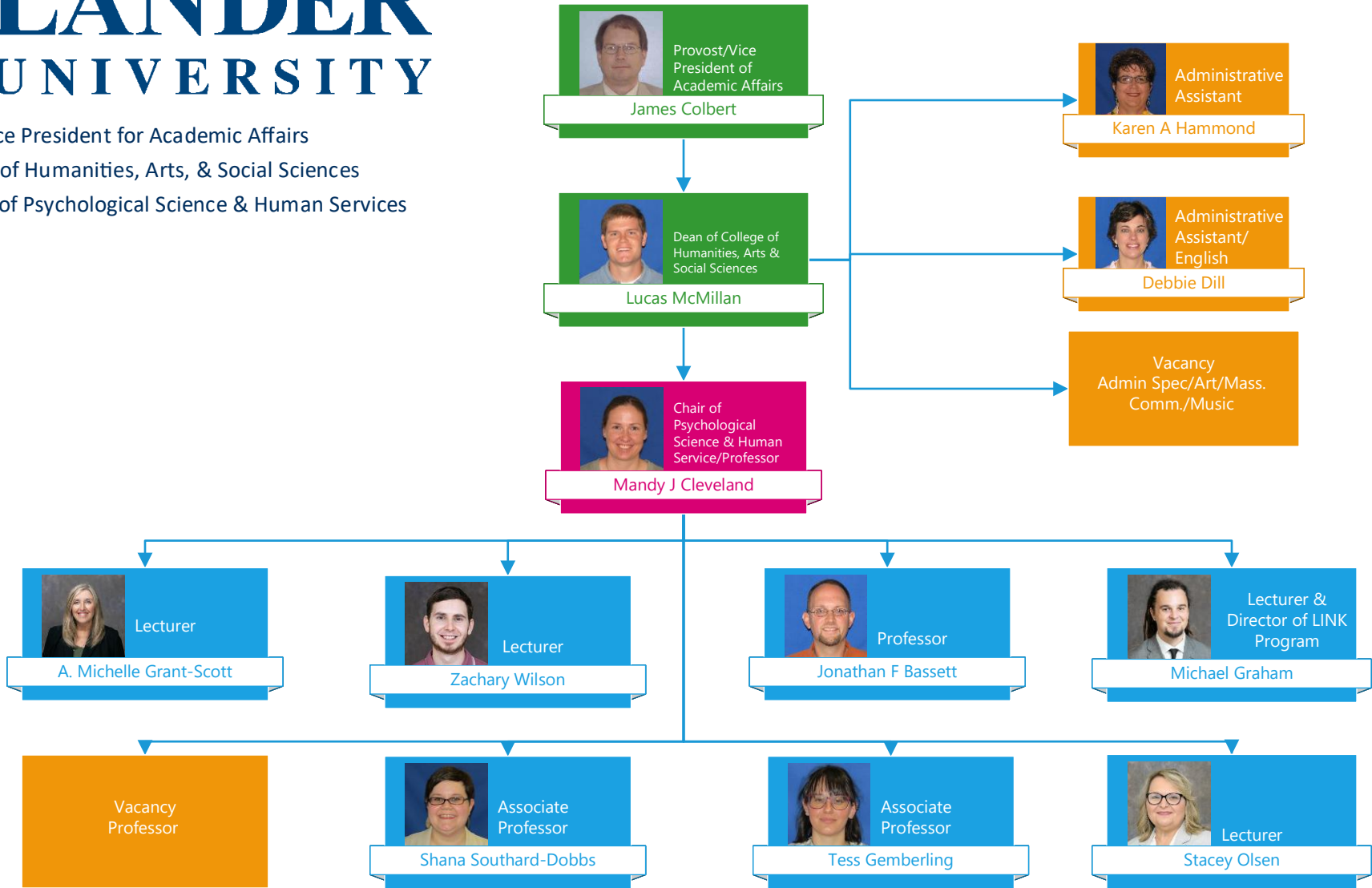


Vice President for Academic Affairs  
College of Humanities, Arts, & Social Sciences  
Department of Government, Criminology, & Sociology





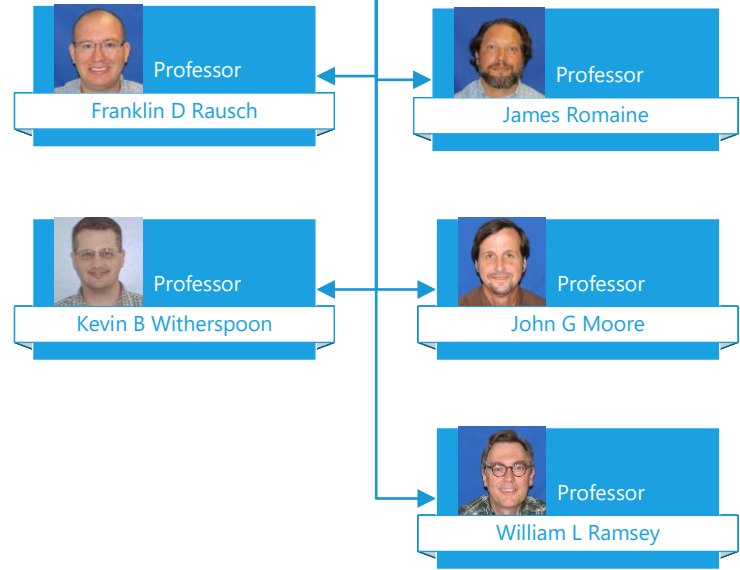
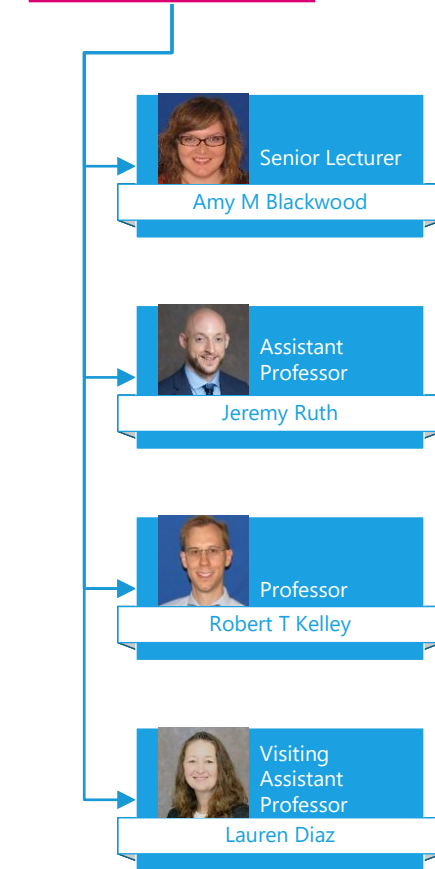
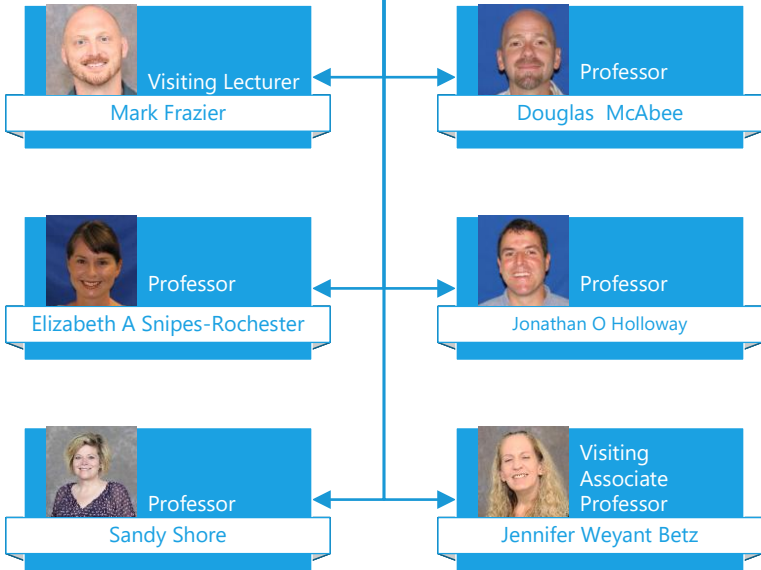
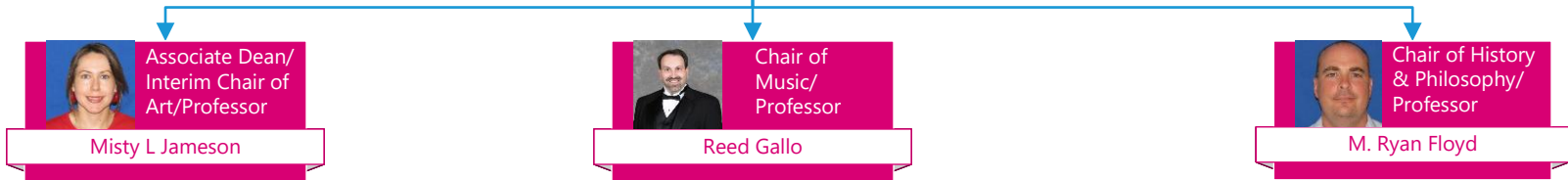
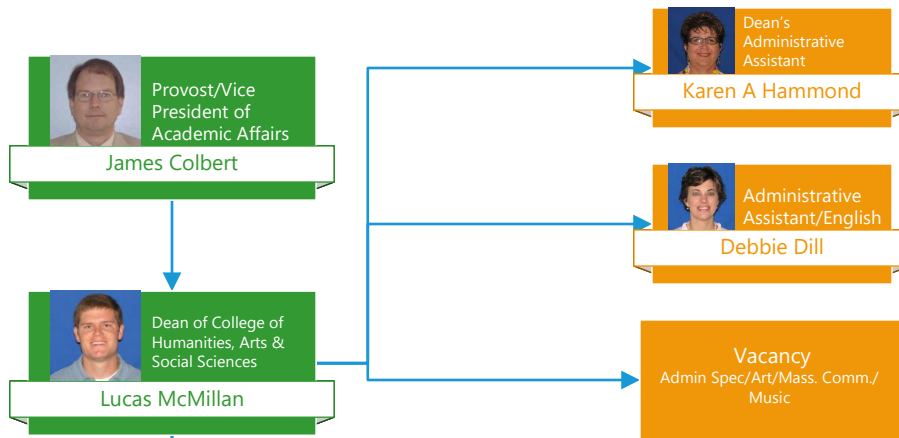
Vice President for Academic Affairs  
College of Humanities, Arts, & Social Sciences  
Department of Psychological Science & Human Services





# LANDER UNIVERSITY

Vice President for Academic Affairs  
College of Humanities, Arts, & Social Sciences  
Department of Art, History & Philosophy, and Music





# LANDER UNIVERSITY

Vice President for Academic Affairs

College of Nursing, Human Performance, & Health Sciences

School of Nursing



Provost/Vice President of Academic Affairs  
**James Colbert**



Dean of Nursing, Human Performance & Health Sciences  
**Holisa C Wharton**




Administrative Assistant  
**Ginny Leopard**



Administrative Specialist  
**Haley Crouch**



Assistant Dean of the School of Nursing/  
Associate Professor  
**Julie Crawford**



Lecturer  
**Amanda Holtzclaw**




Associate Professor  
**Dori Dahlberg**



Assistant Professor  
**Crystal King**




Associate Professor  
**Ashley Lee**




Clinical Instructor  
**Holly Sowko**




Clinical Instructor  
**Jennifer Stabosz**



Lecturer  
**Jill Puetz**



Lecturer  
**Katie Darmer**



Lecturer  
**Kayla Pruitt**



Public Health Program Coordinator/  
Assistant Professor  
**Claire Mensack**




Professor  
**Liz McDowell**



Lecturer & CARE Program Coordinator  
**Marshay Whimbush**



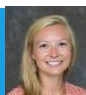
Assistant Professor  
**Rachel Coats**



Lecturer  
**Lori Stone**



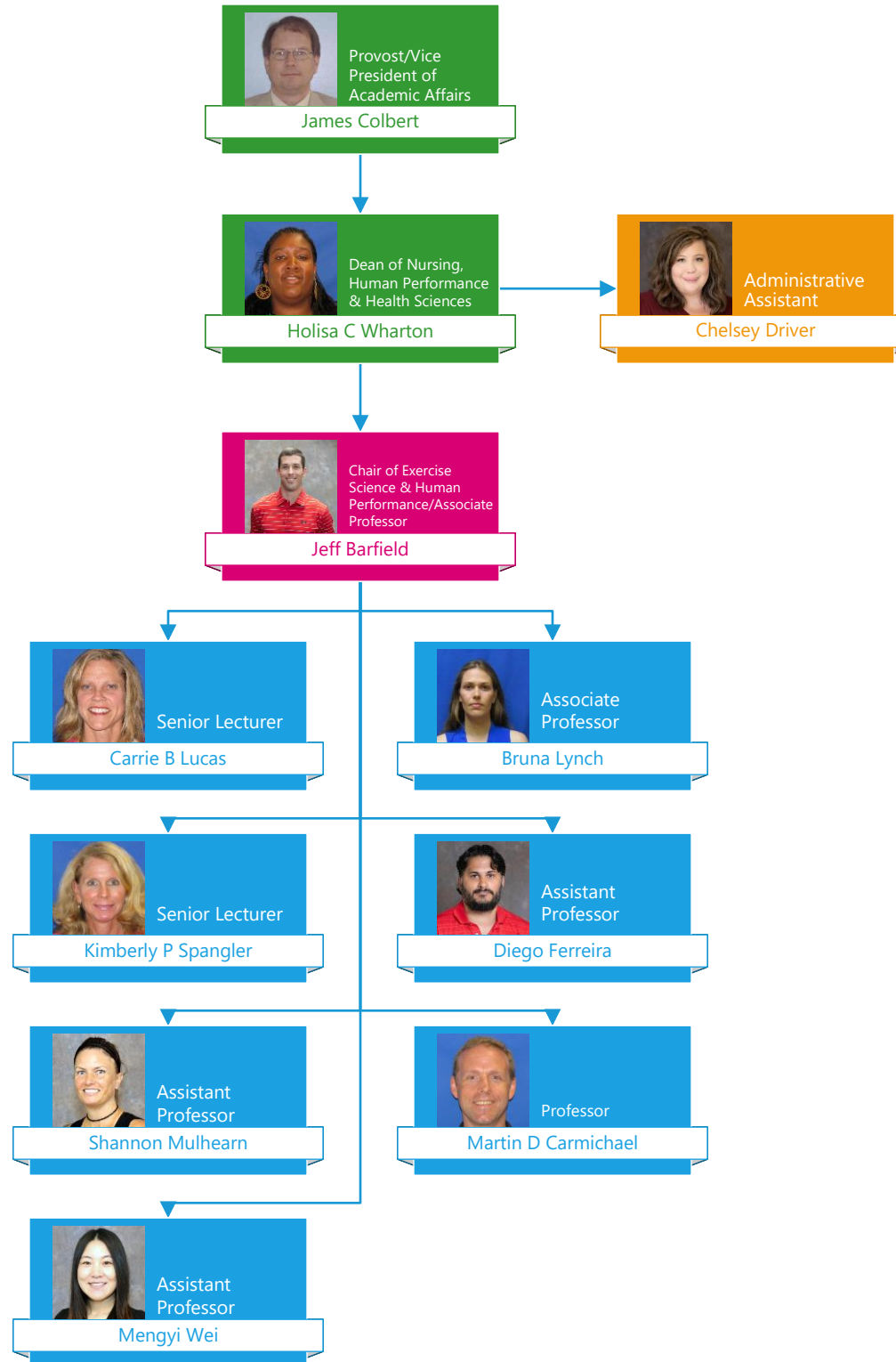
Associate Professor  
**Stephanie Yonce**



Lecturer  
**Lauren Buchanan**



Vice President for Academic Affairs  
College of Nursing, Human Performance, & Health Sciences  
Department of Exercise Science & Human Performance





Vice President for Academic Affairs  
 College of Science & Mathematics  
 Department of Biology



Provost/Vice President of Academic Affairs  
**James Colbert**




Dean, College of Science and Mathematics  
**Jennifer Yates**




Dean's Administrative Assistant  
**Heather Martin**




Chair of Biology/ Professor  
**Jason P Lee**



Assistant Professor  
**Elizabeth McDonald**




Senior Instructor  
**Ann E Butler**




Lecturer  
**Dawn Carter**




Associate Professor  
**Elyse Donaubaer**




Professor  
**Emily Prince**




Professor  
**Kerry A Hansknecht**




Professor  
**Jennifer J Maze**




Associate Professor  
**M. Melissa Hayes**



Instructor  
**Kathryn White**



Instructor  
**Ryan Kimbell**




Lecturer  
**Melissa Scott**



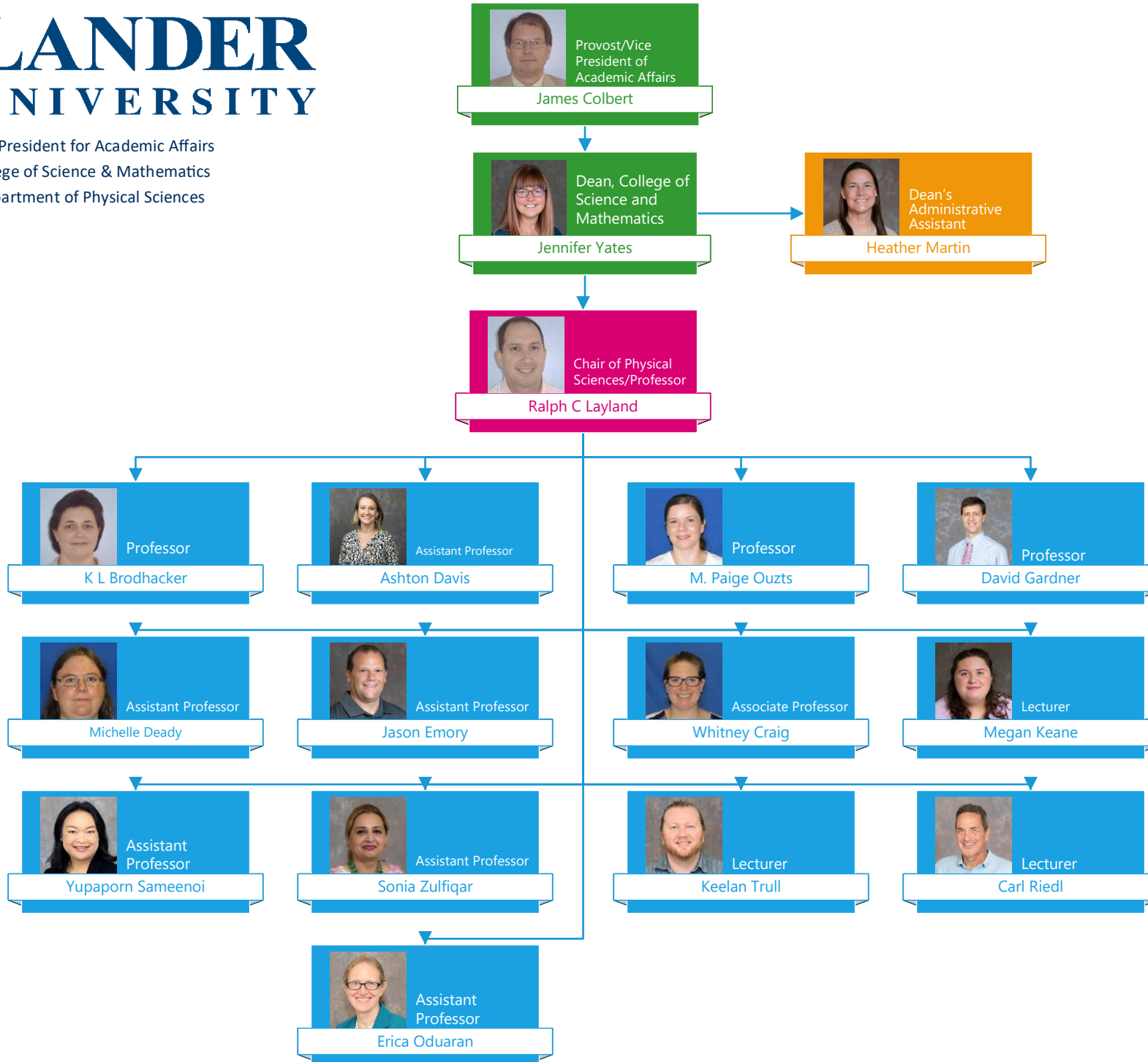
Professor  
**Timothy D Maze**

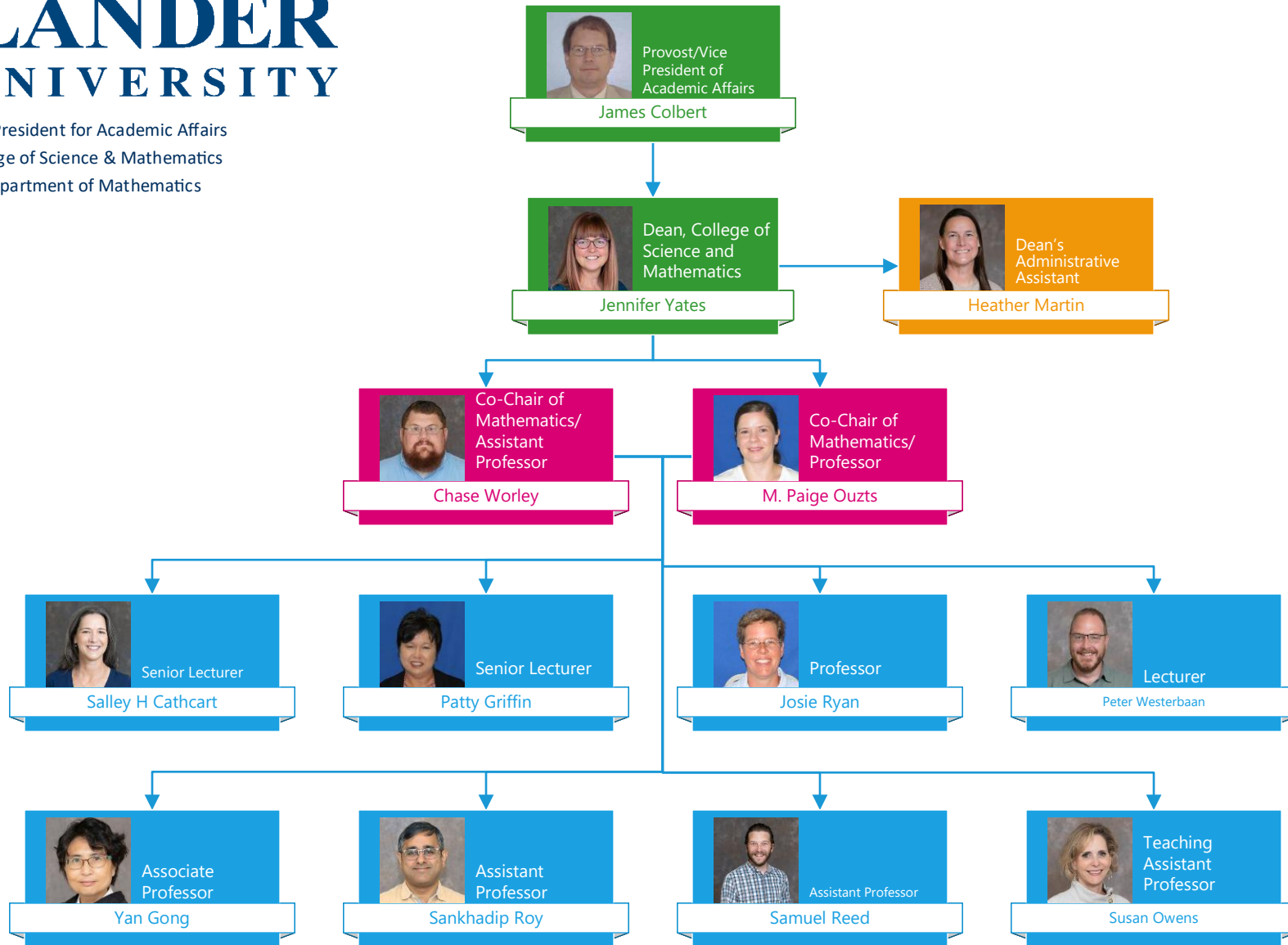


Visiting Assistant Professor  
**Bradley Griggs**



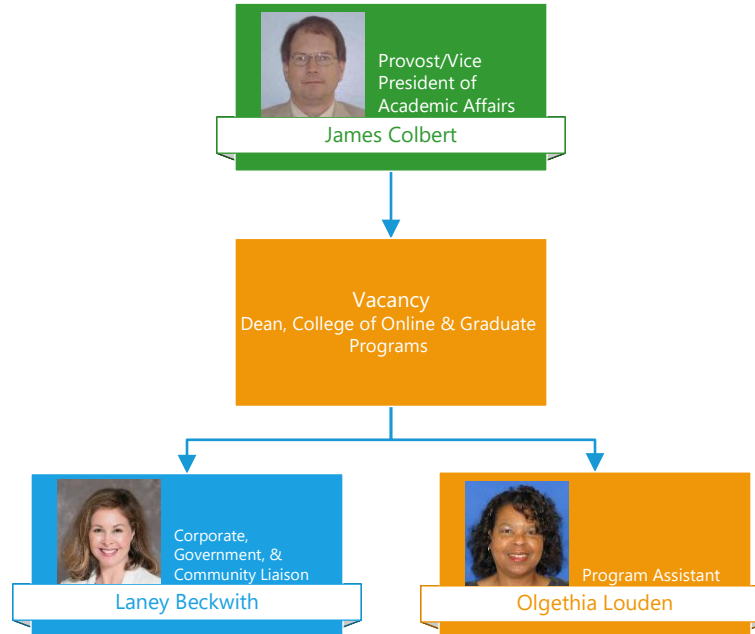
Lecturer  
**Holly Miller**

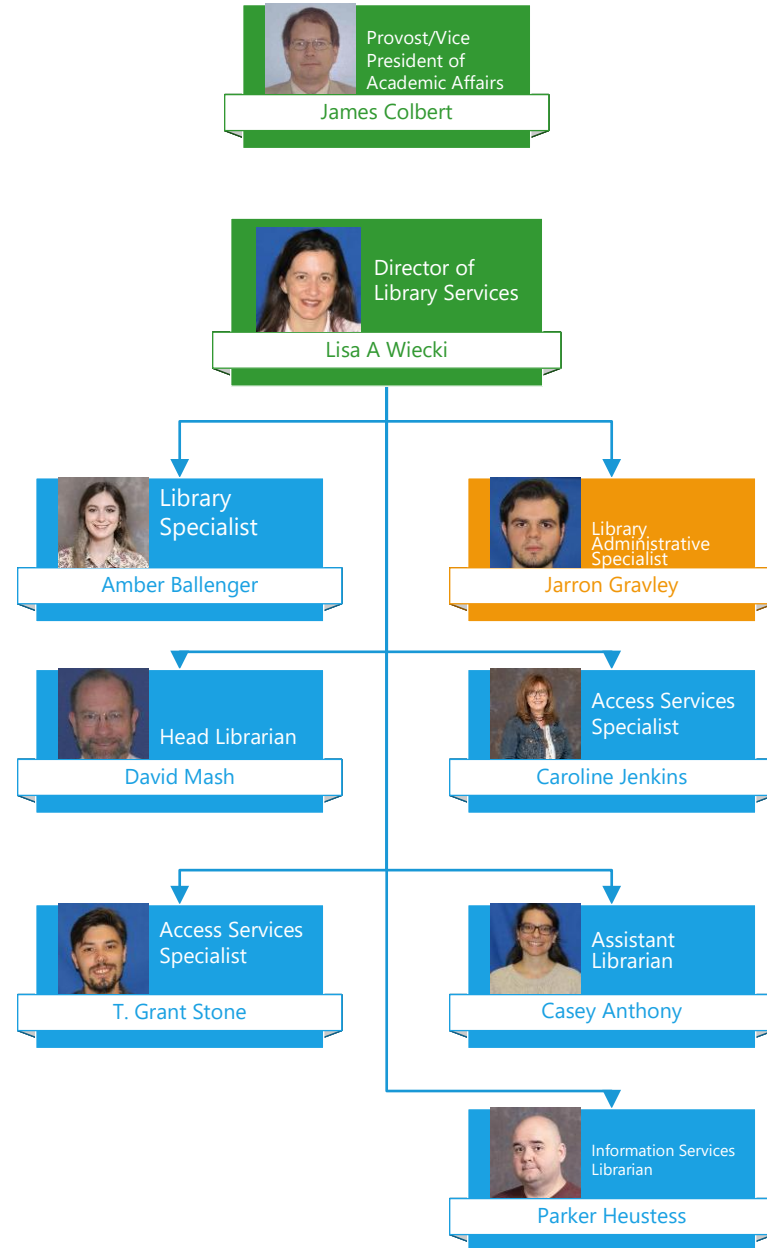






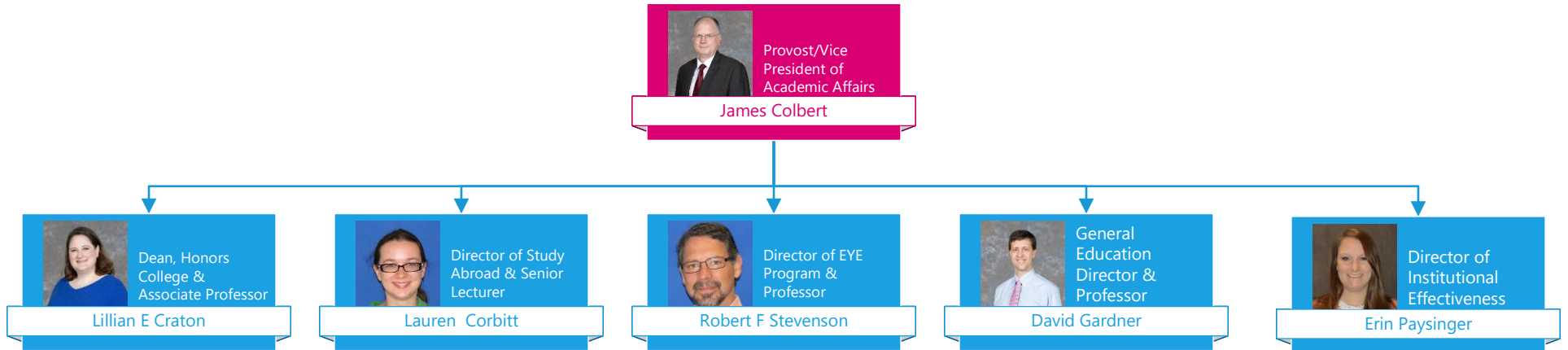
Vice President for Academic Affairs  
College of Online & Graduate Programs





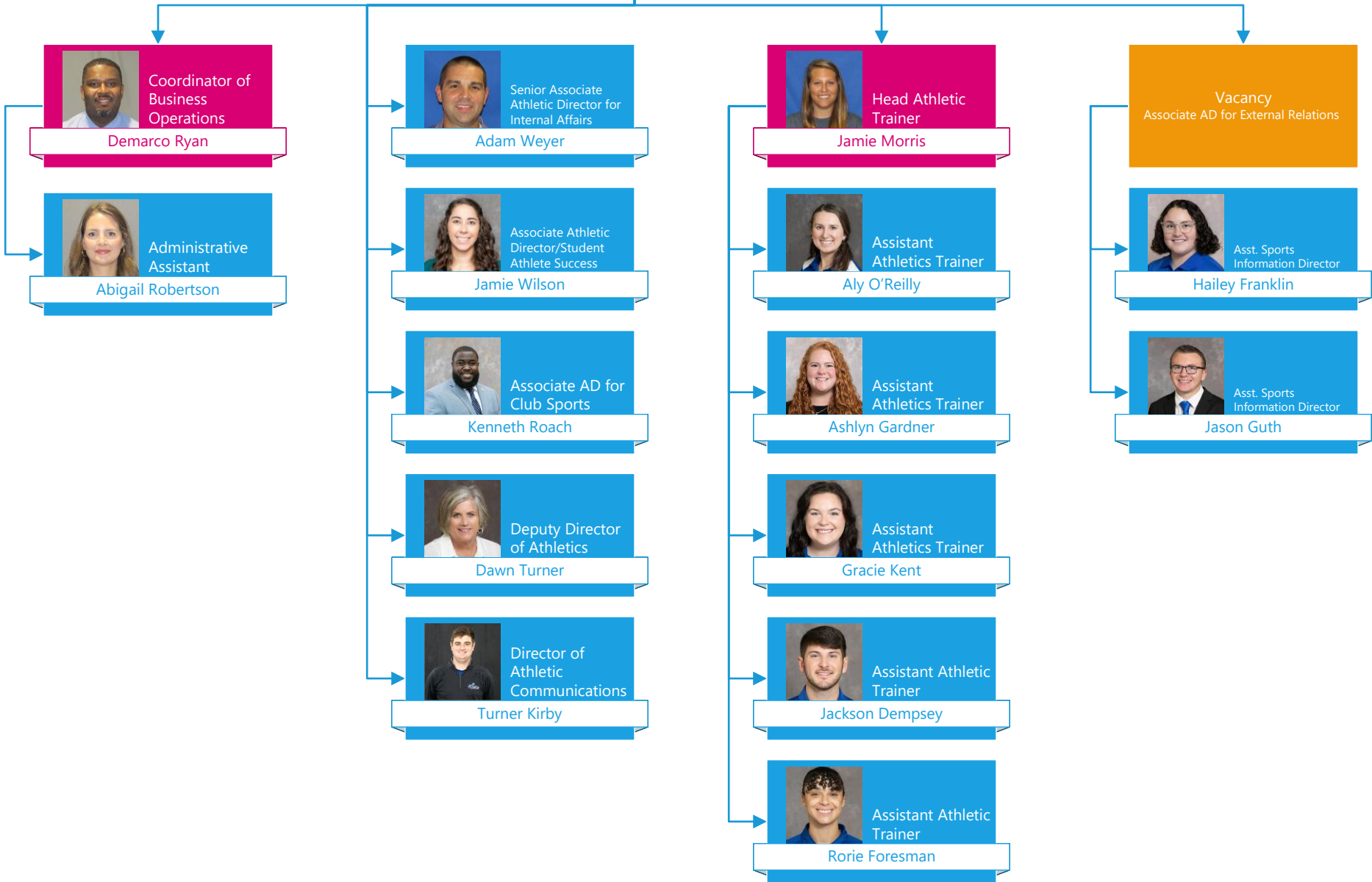


Vice President of Academic Affairs  
University Center of Greenville







**Athletic Director**  
Brian Reese




**Coordinator of Business Operations**  
Demarco Ryan



**Administrative Assistant**  
Abigail Robertson



**Senior Associate Athletic Director for Internal Affairs**  
Adam Weyer



**Associate Athletic Director/Student Athlete Success**  
Jamie Wilson




**Associate AD for Club Sports**  
Kenneth Roach



**Deputy Director of Athletics**  
Dawn Turner



**Director of Athletic Communications**  
Turner Kirby



**Head Athletic Trainer**  
Jamie Morris



**Assistant Athletics Trainer**  
Aly O'Reilly



**Assistant Athletics Trainer**  
Ashlyn Gardner



**Assistant Athletics Trainer**  
Gracie Kent



**Assistant Athletic Trainer**  
Jackson Dempsey



**Assistant Athletic Trainer**  
Rorie Foresman

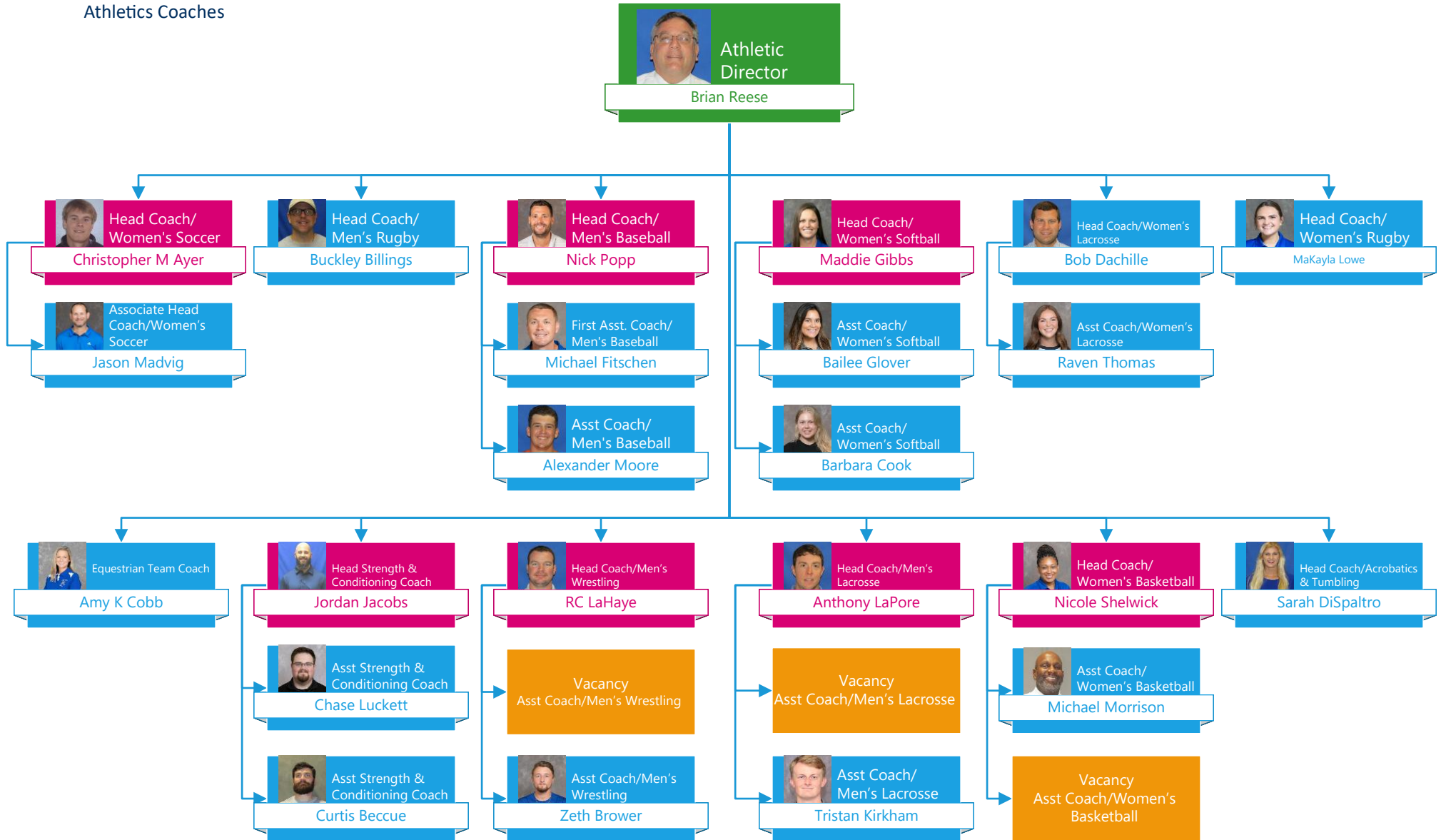
**Vacancy**  
Associate AD for External Relations

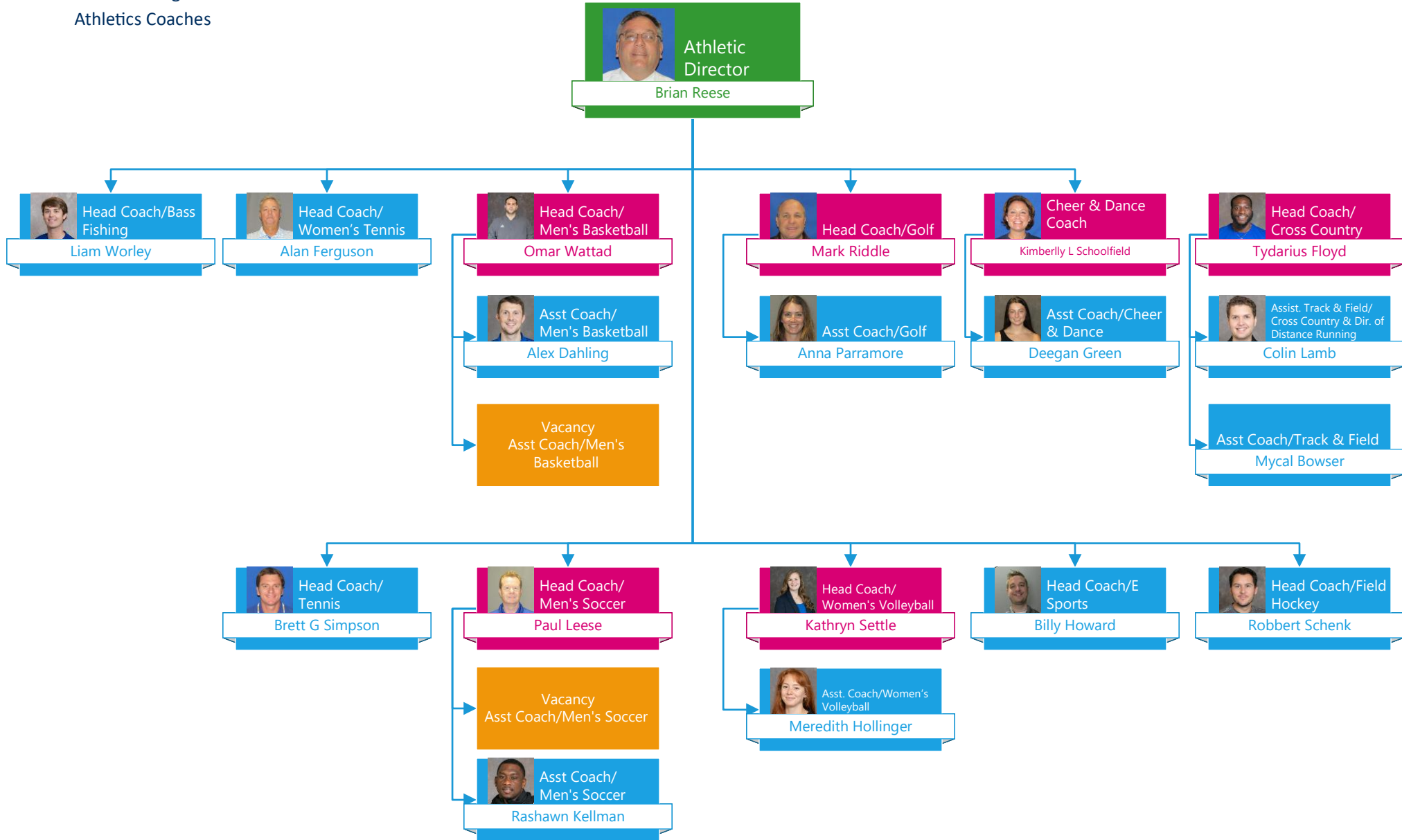


**Asst. Sports Information Director**  
Hailey Franklin



**Asst. Sports Information Director**  
Jason Guth







Dean of Students

Vice President for Student Experience & Quality Assurance  
Amanda Darden

Dean of Students  
David Drucker

Vacancy  
Administrative Assistant

Director of Housing & Resident Life  
Catherine Covar

Director of CARE and Advocacy  
Karen Mobley

Vacancy  
Director of Student Conduct & Community Standards

Executive Director of Wellness & Holistic Support  
Kim Shannon

Vacancy  
Dean, College of Online & Graduate Programs

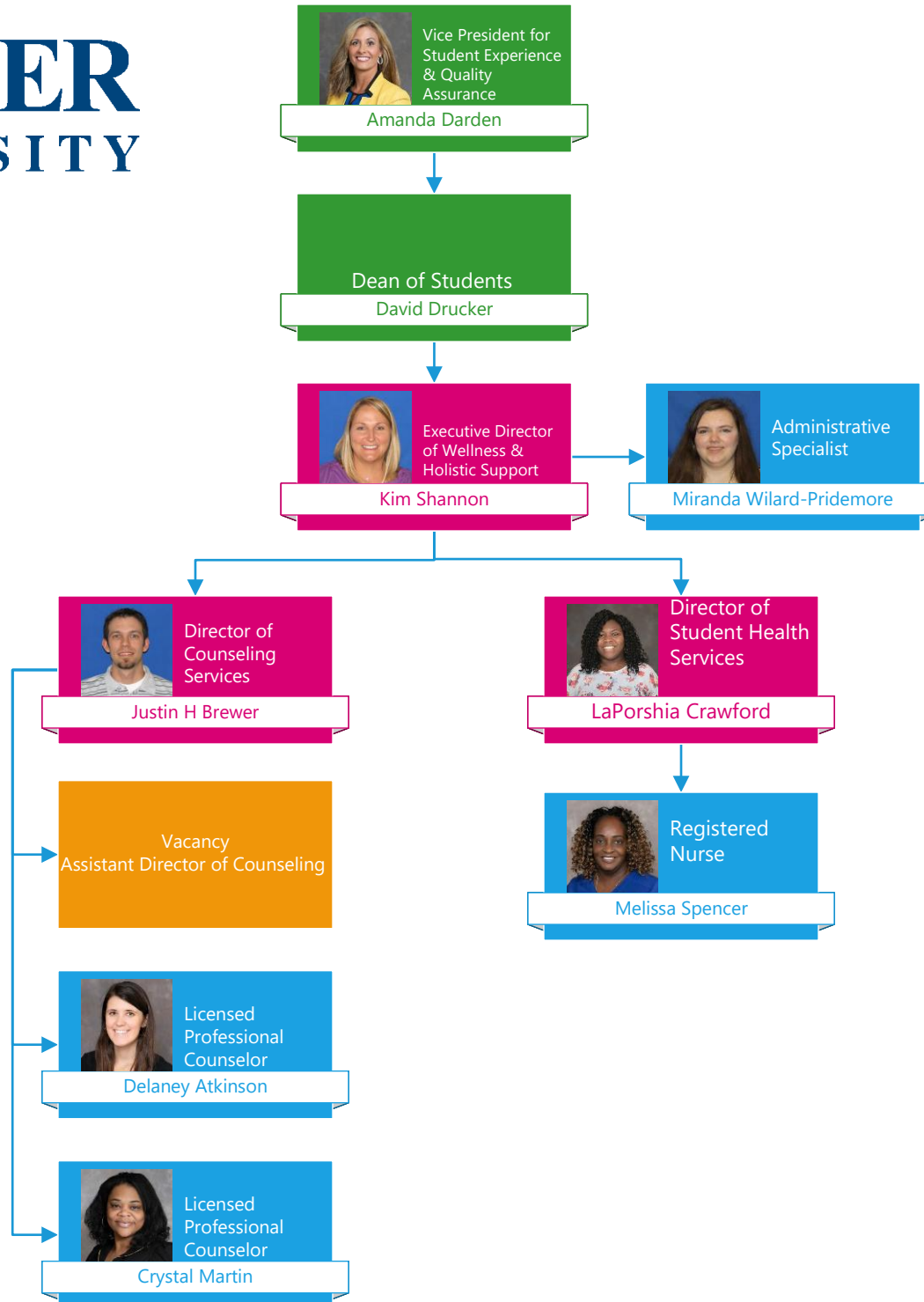
Vacancy  
Student Outreach Coordinator

Vacancy  
Director of Assessment and Retention Strategies



# LANDER UNIVERSITY

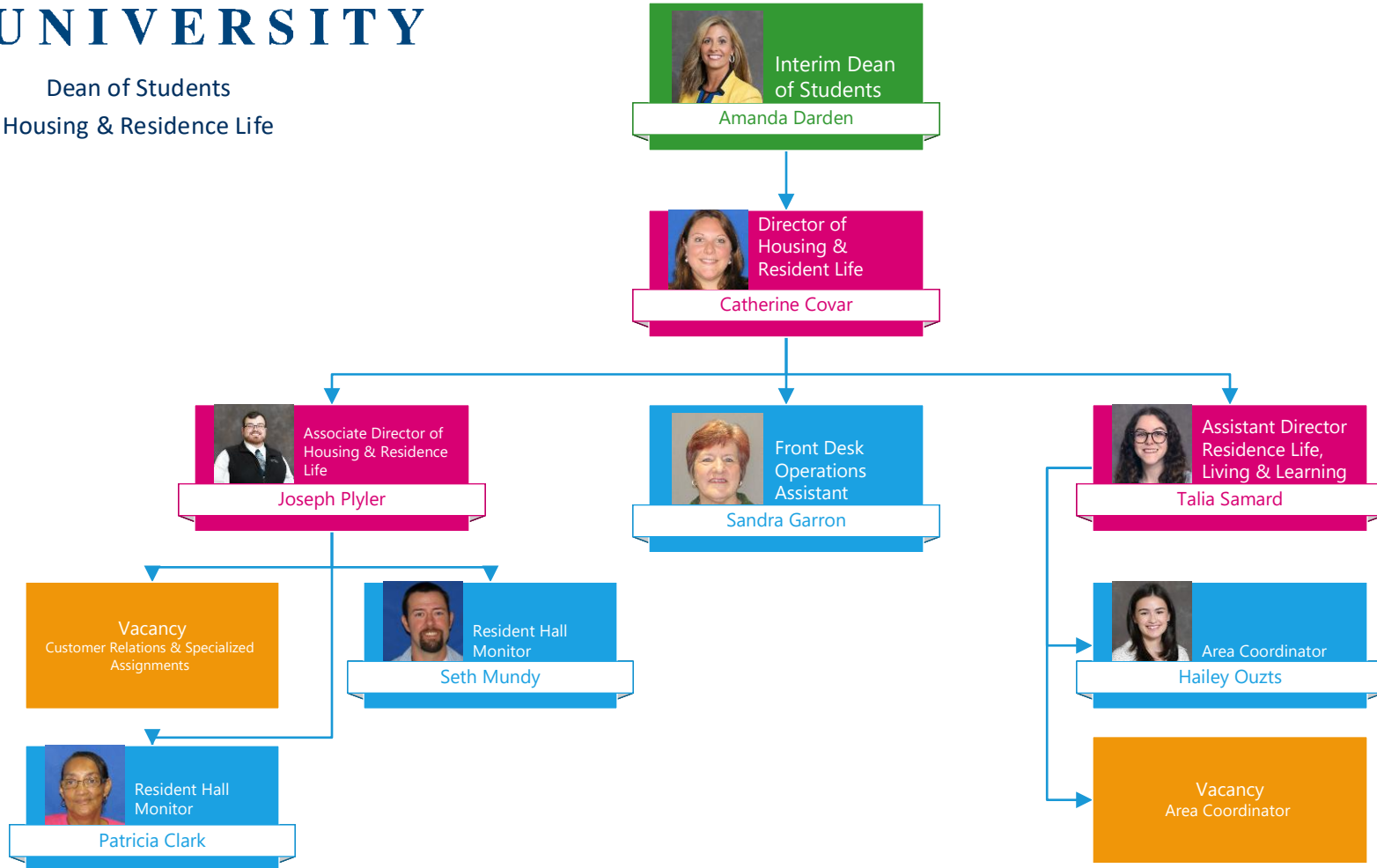
Dean of Students  
Health & Wellness



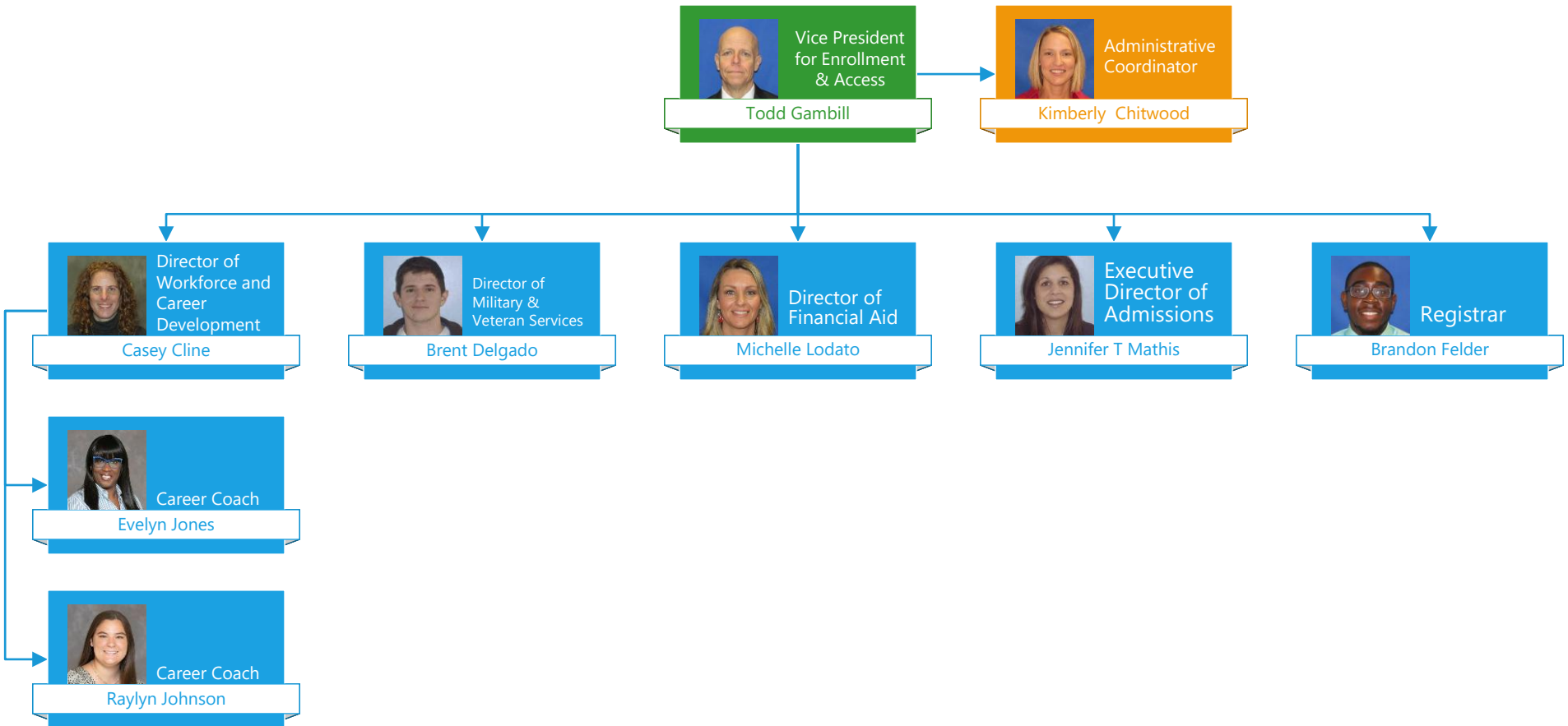


# LANDER UNIVERSITY

Dean of Students  
Housing & Residence Life



Vice President for Enrollment & Access  
Enrollment Management

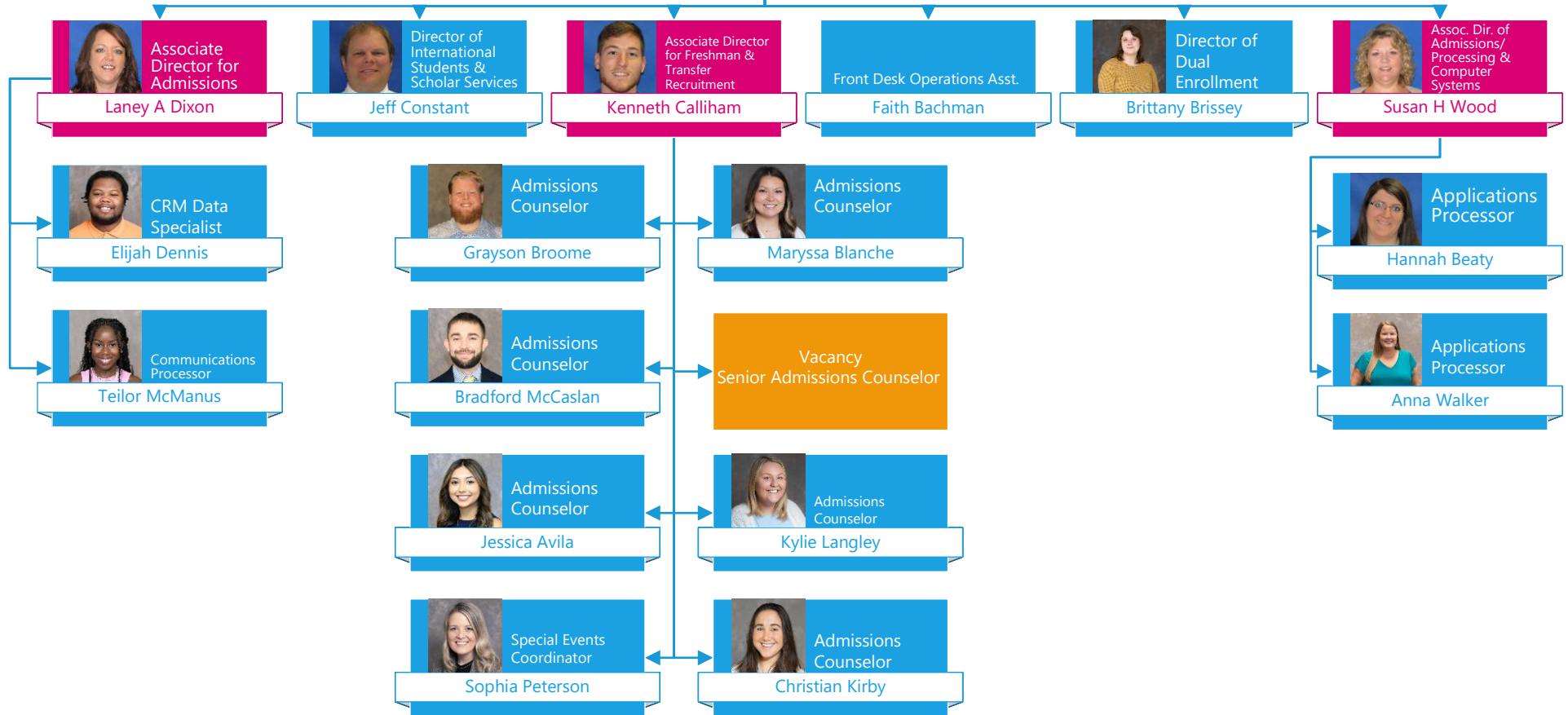


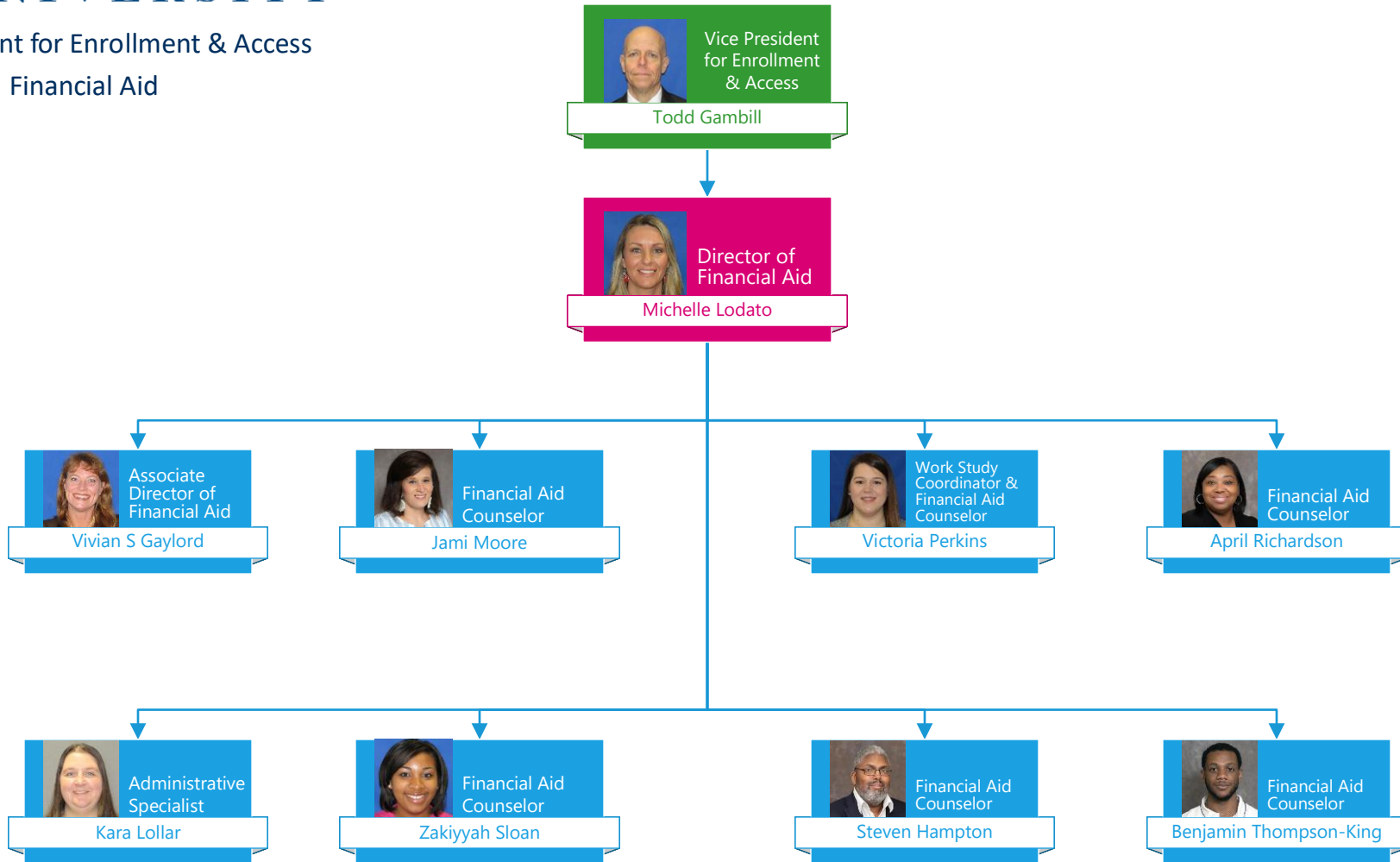


Vice President for Enrollment & Access  
Admissions

 Vice President for Enrollment & Access  
Todd Gambill

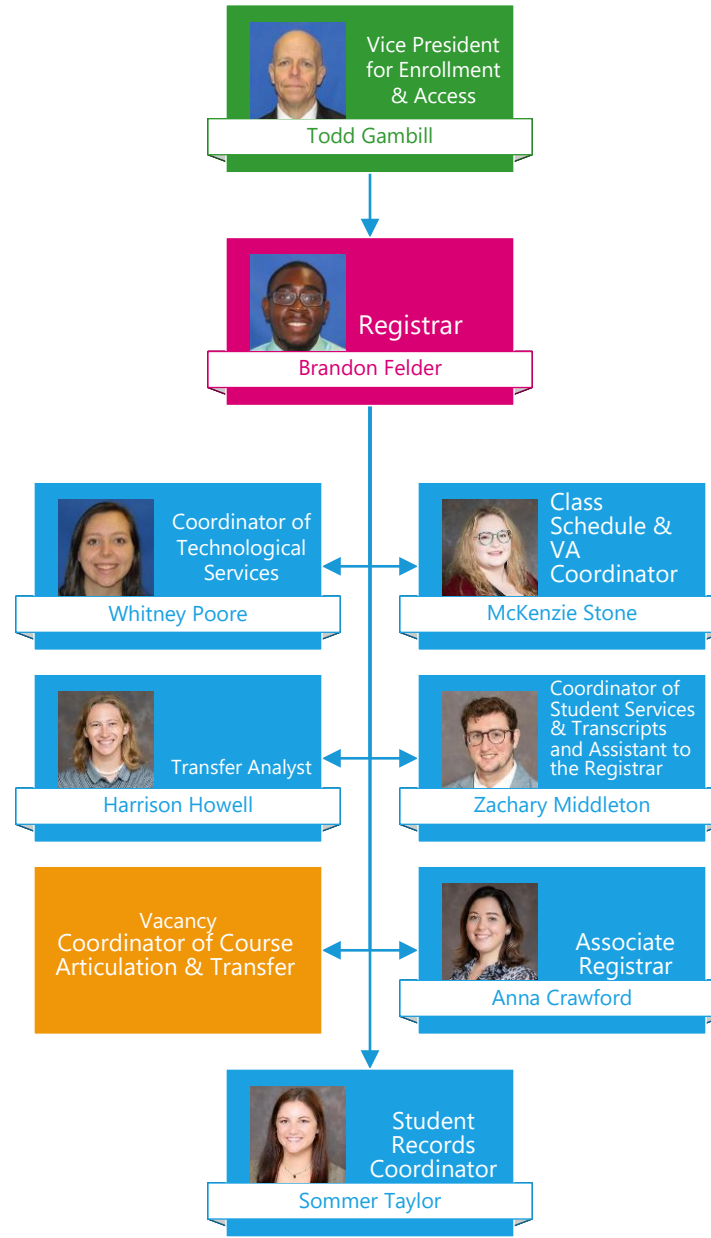
 Executive Director of Admissions  
Jennifer T Mathis







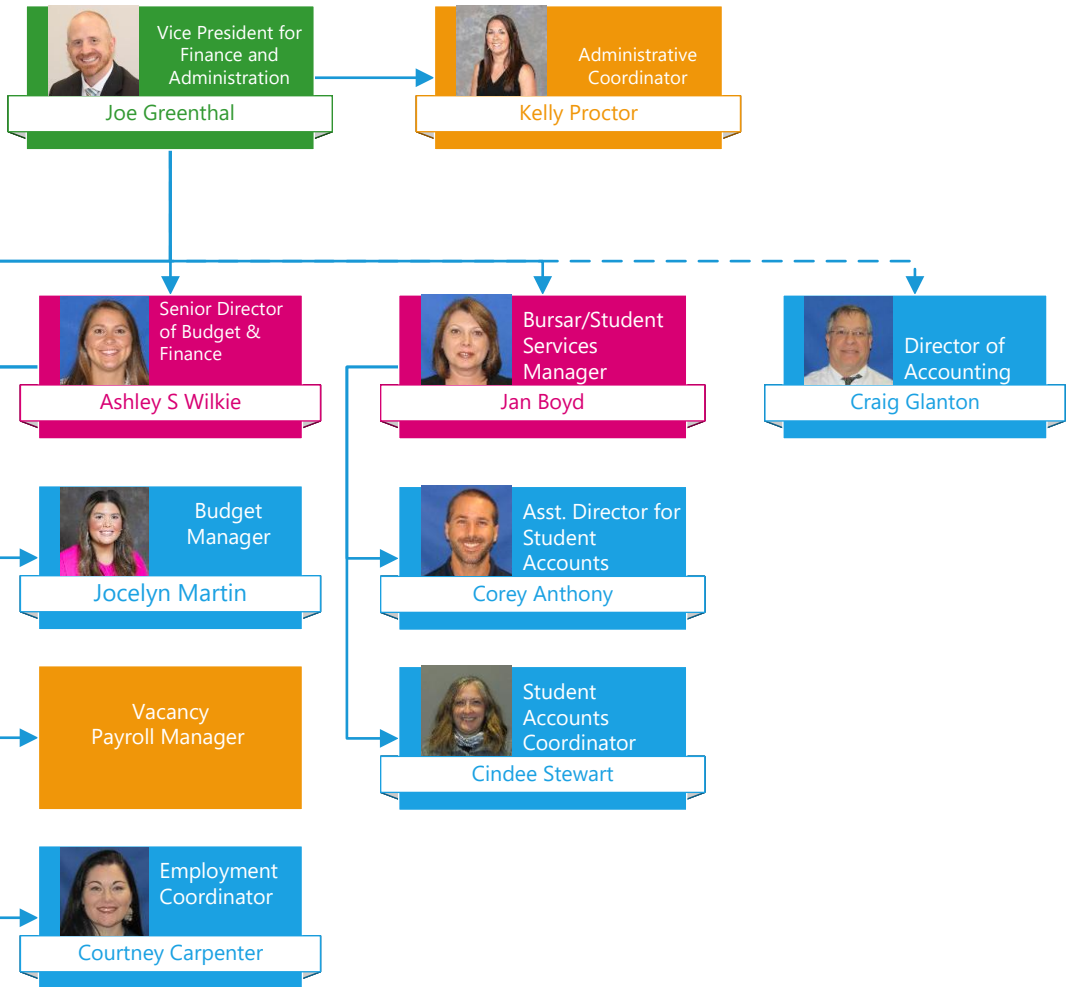
Vice President for Enrollment & Access  
Registrar's Office

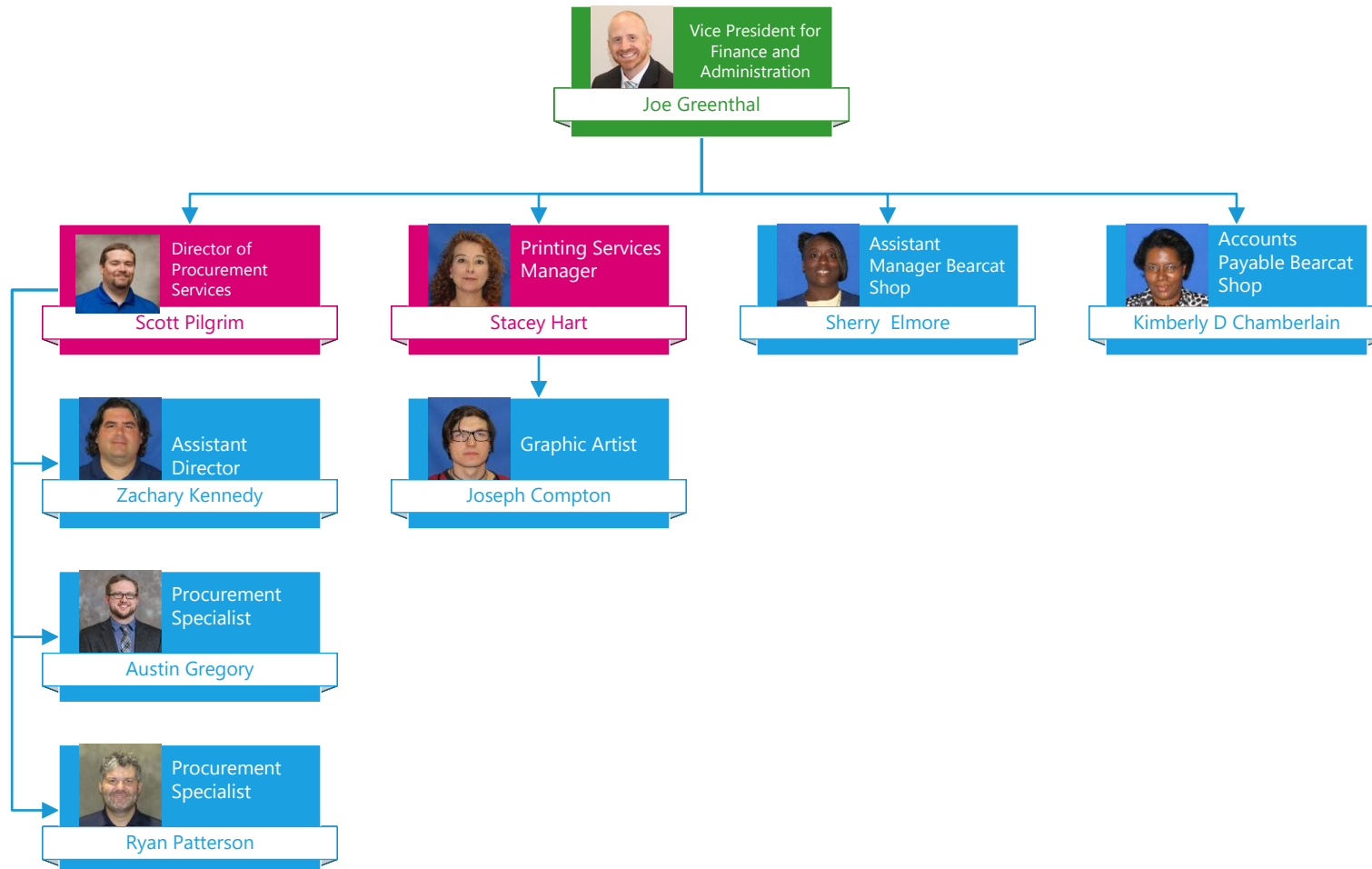






Vice President for Finance & Administration  
Accounting & Budget





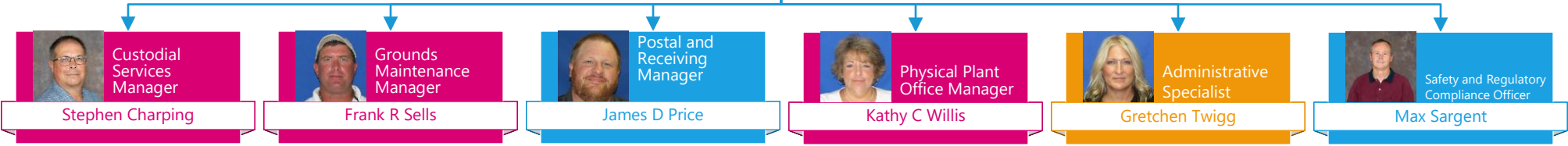


Vice President for Finance & Administration  
Facilities Operations

Vice President for Finance and Administration  
**Joe Greenthal**

Assistant VP for Facilities Operations  
**William Kropff**

Director of Facilities Operations  
**Glenn Shaw**



Custodial Services Manager  
**Stephen Charping**

Grounds Maintenance Manager  
**Frank R Sells**

Postal and Receiving Manager  
**James D Price**

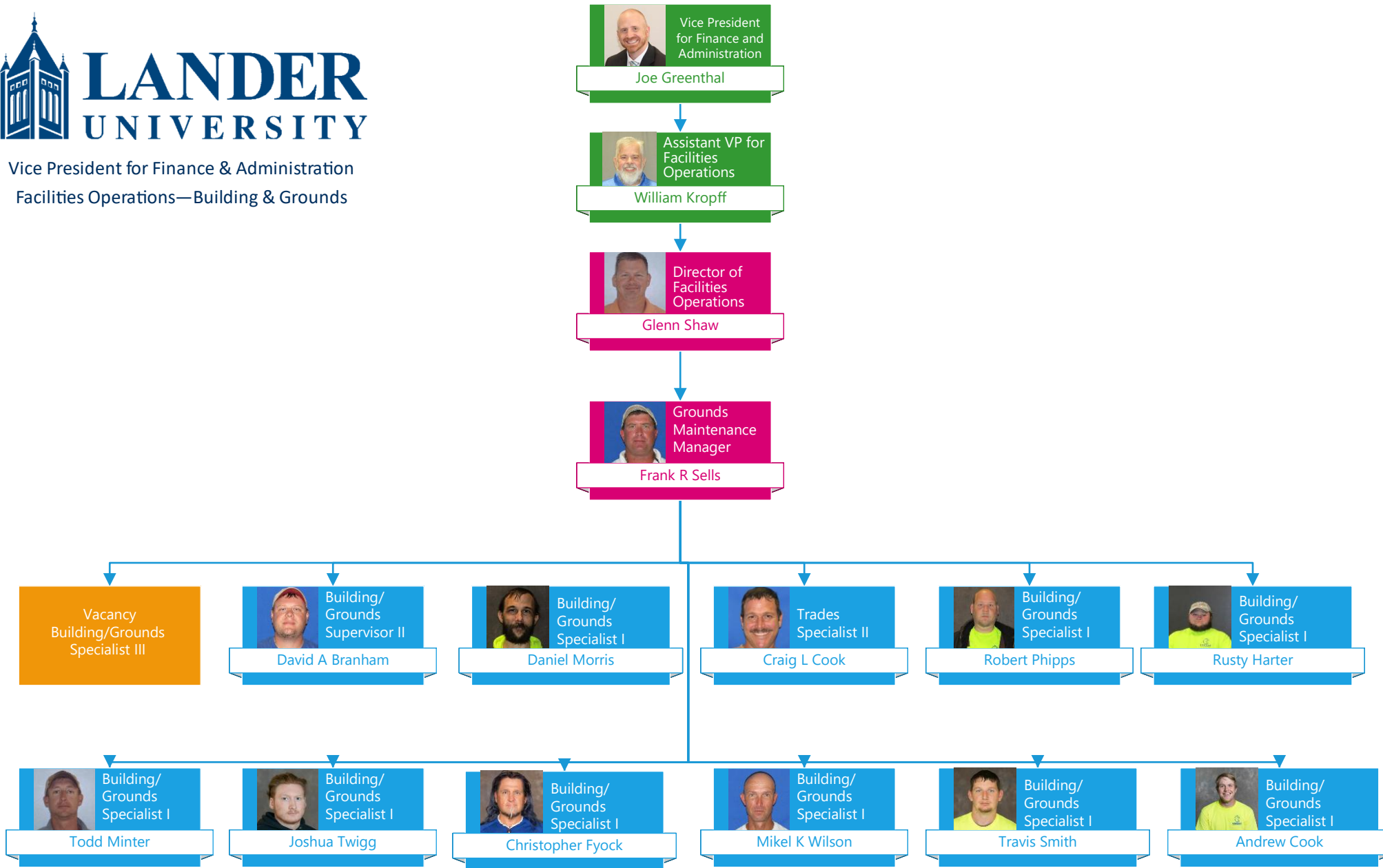
Physical Plant Office Manager  
**Kathy C Willis**

Administrative Specialist  
**Gretchen Twigg**

Safety and Regulatory Compliance Officer  
**Max Sargent**



Vice President for Finance & Administration  
Facilities Operations—Building & Grounds





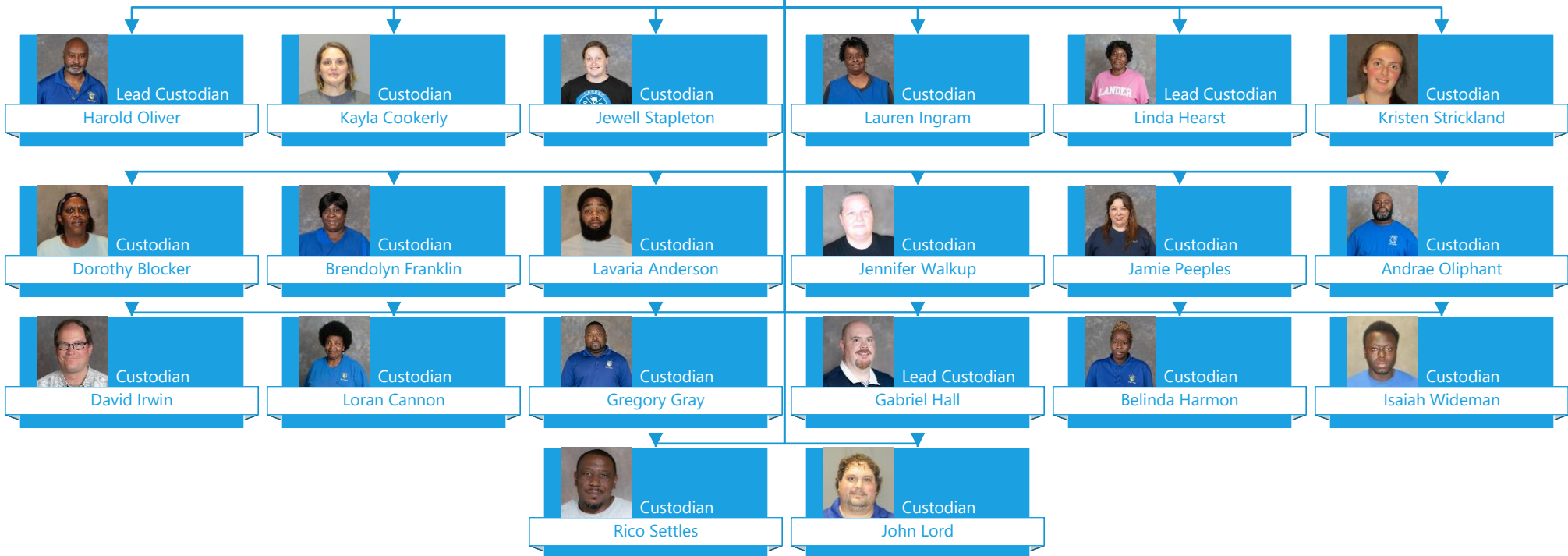
Vice President of Finance and Administration  
Facilities Operations—Custodial/Housekeeping

Vice President  
for Finance and  
Administration  
**Joe Greenthal**

Assistant VP for  
Facilities  
Operations  
**William Kropff**

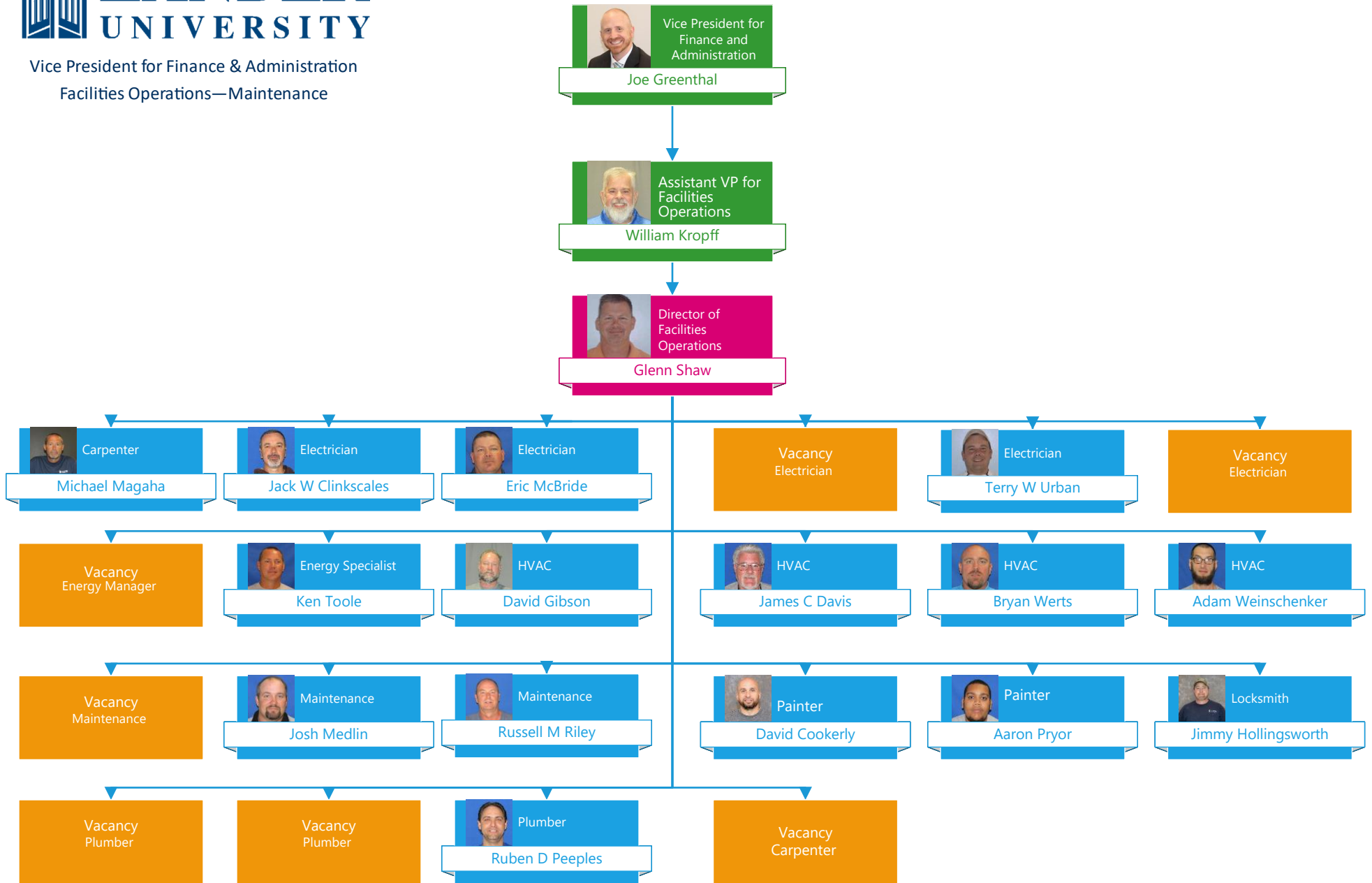
Director of  
Facilities  
Operations  
**Glenn Shaw**

Custodial  
Services  
Manager  
**Stephen Charping**



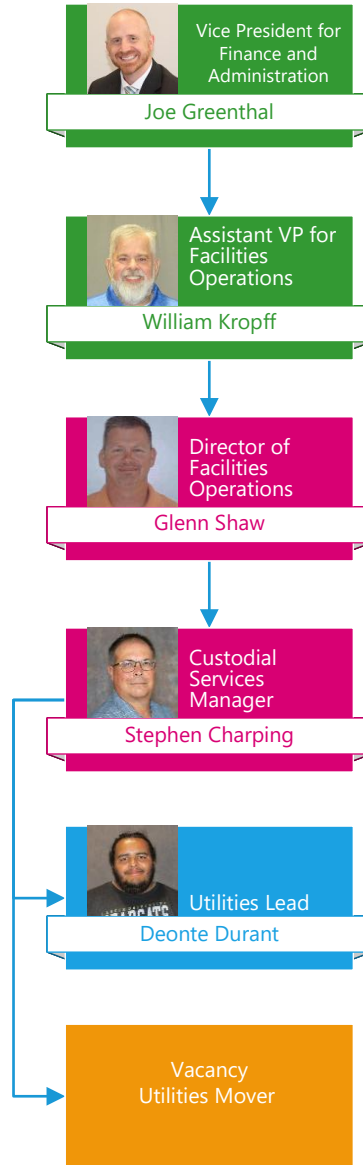


Vice President for Finance & Administration  
Facilities Operations—Maintenance



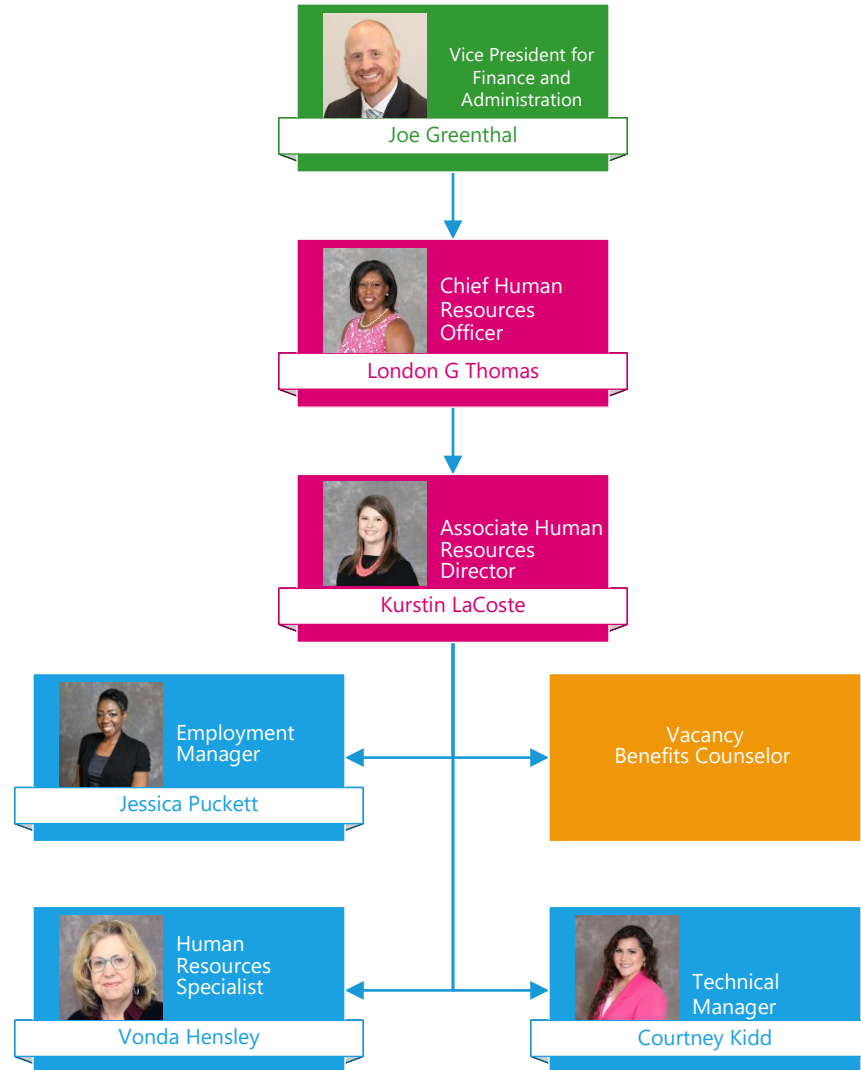


Vice President for Finance & Administration  
Facilities Operations—Utilities



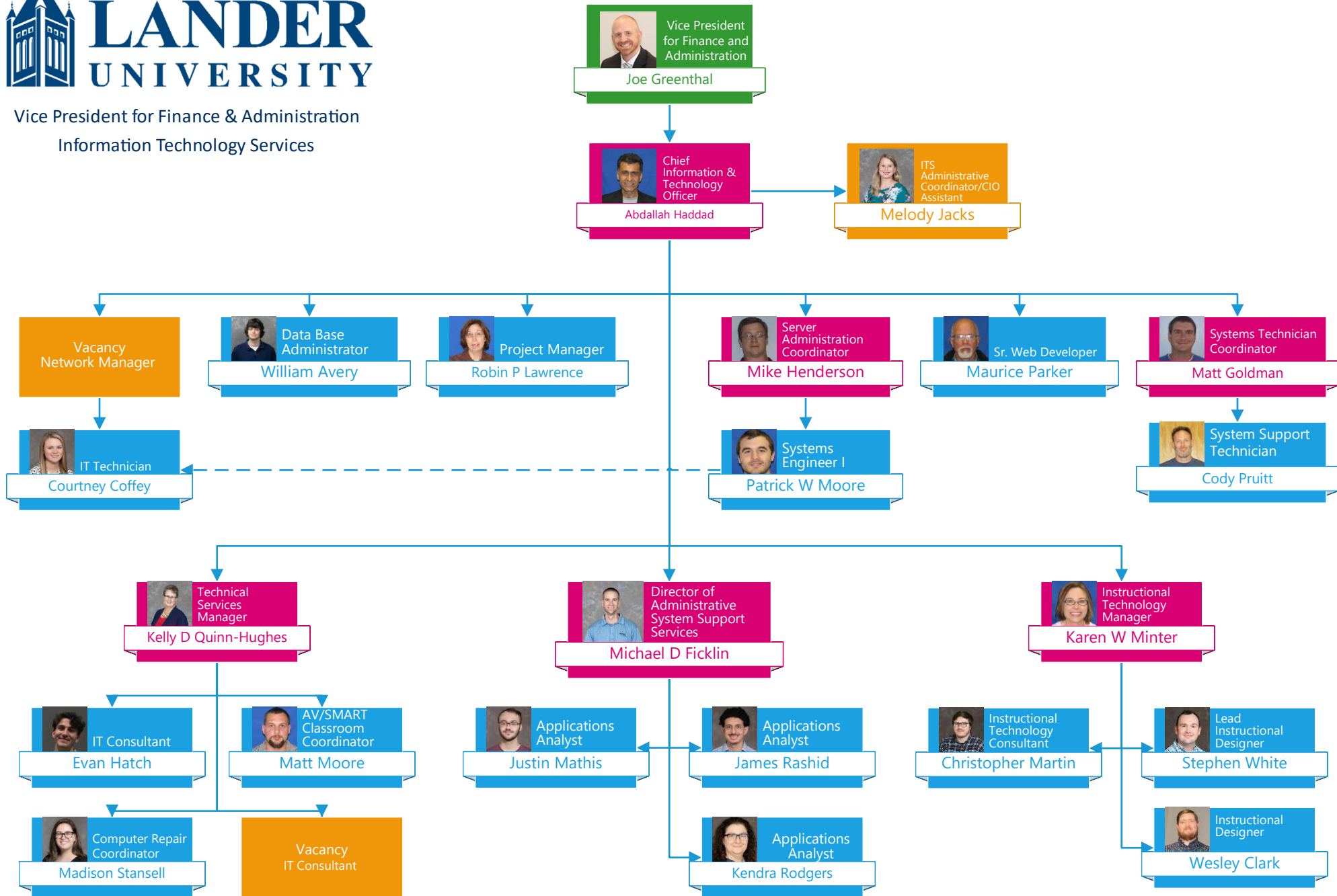


Vice President of Finance and Administration  
Office of Human Resources



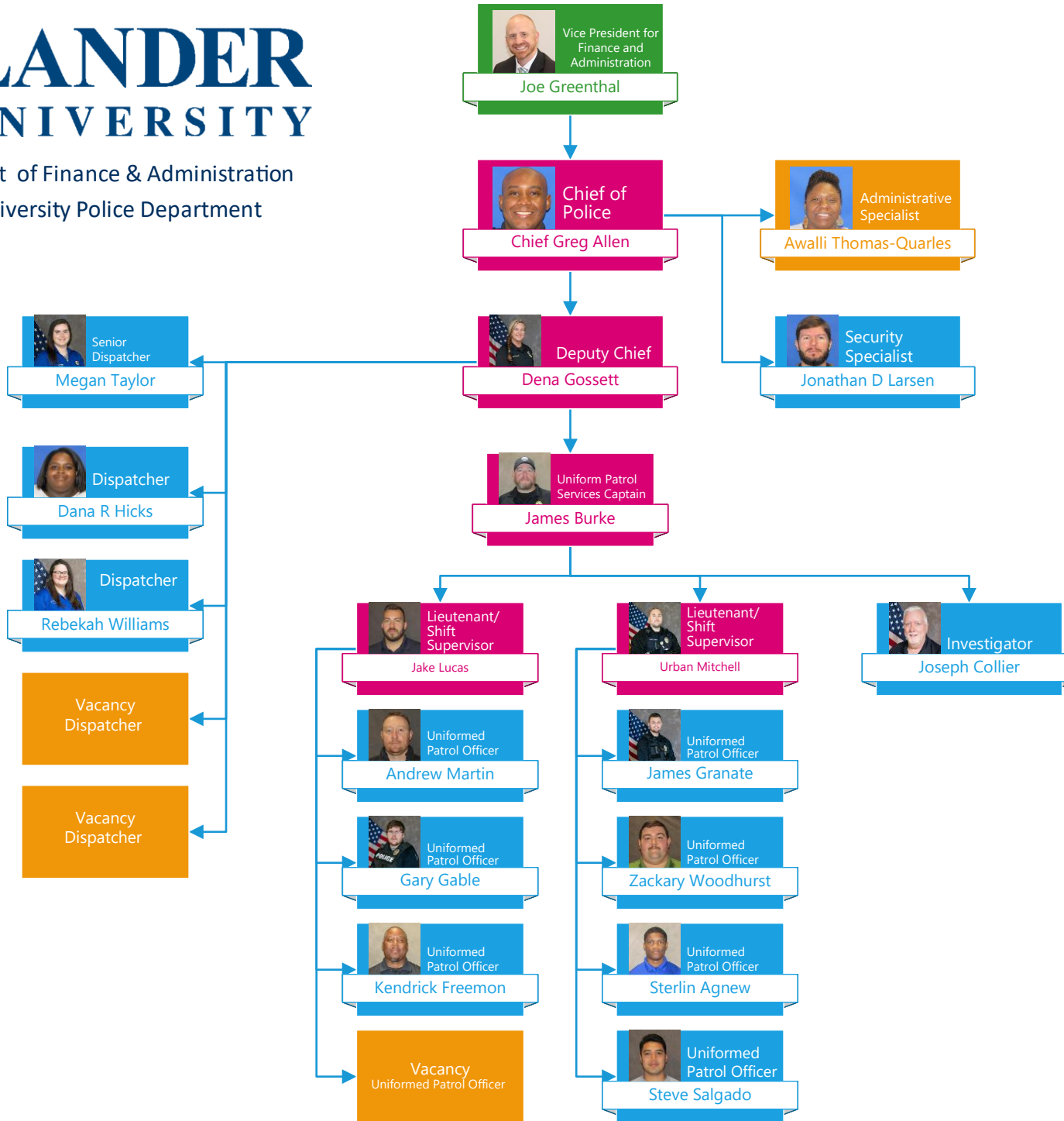


Vice President for Finance & Administration  
Information Technology Services



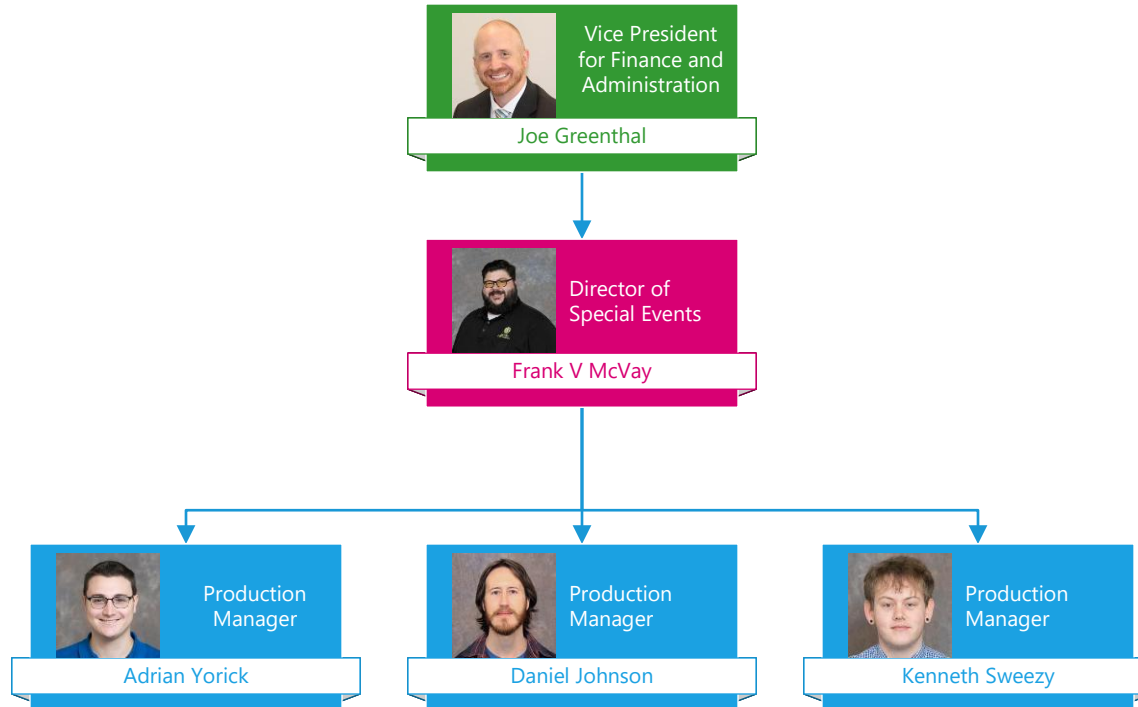


Vice President of Finance & Administration  
Lander University Police Department



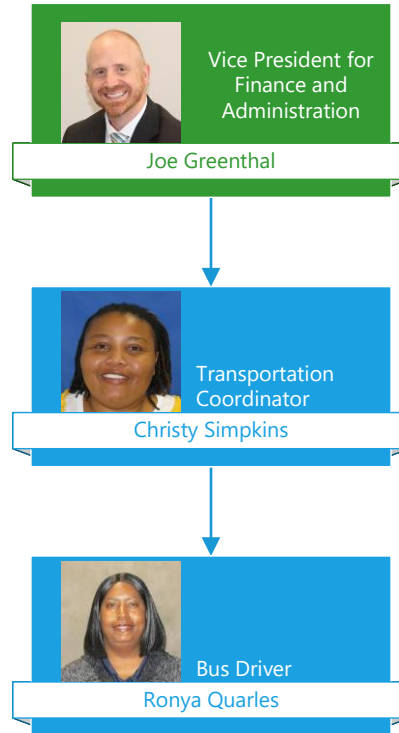


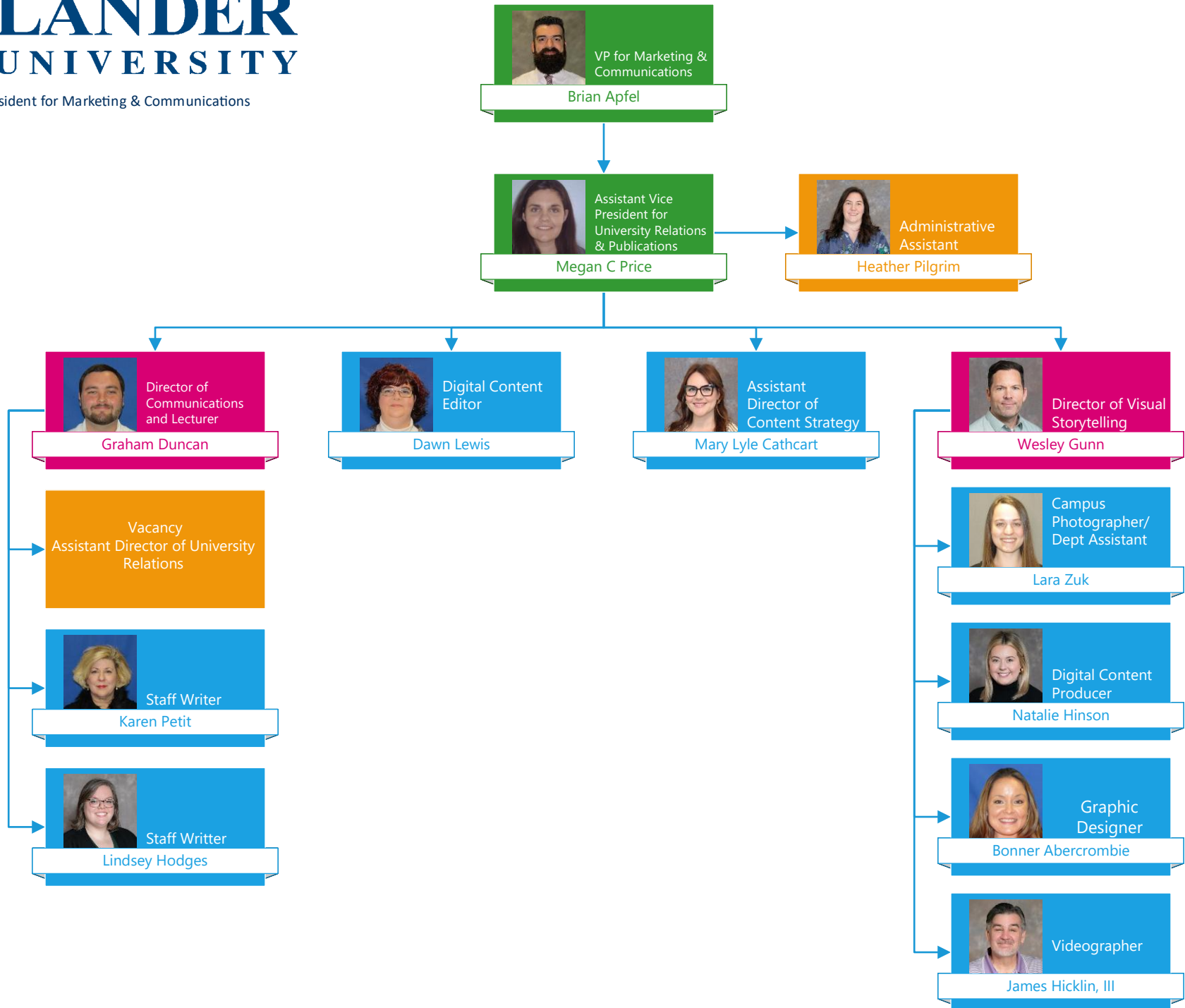
Vice President for Finance & Administration  
Special Events

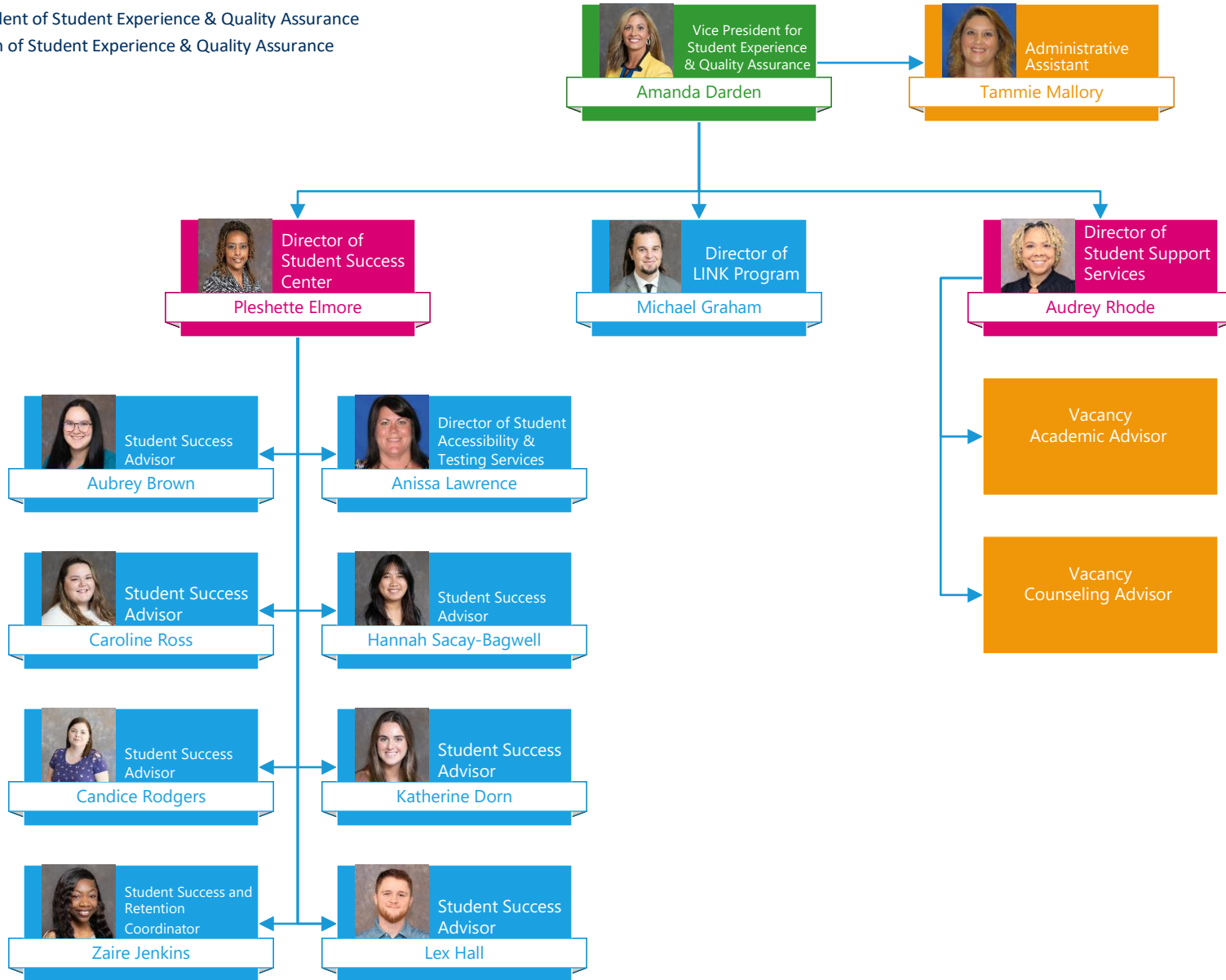




Vice President for Finance & Administration  
Transportation

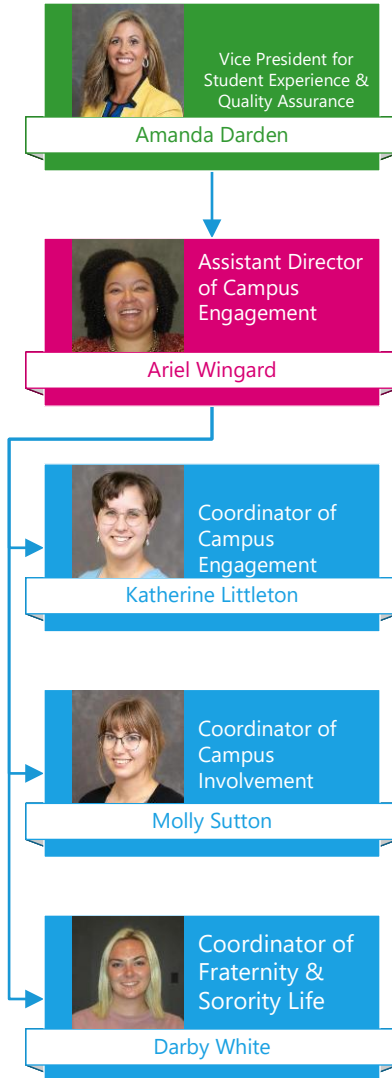






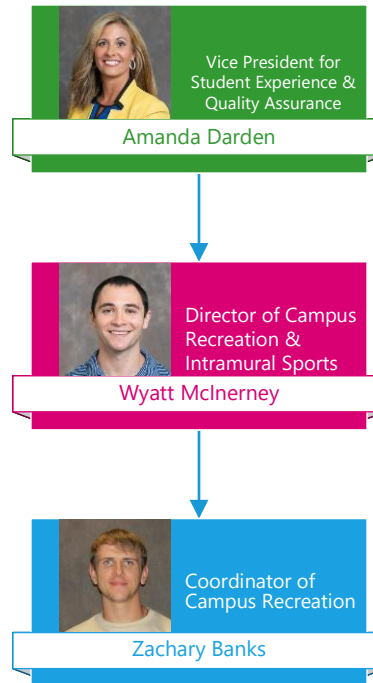


Vice President of Student Experience & Quality Assurance  
Student Activities





Vice President of Student Experience & Quality Assurance  
Campus Recreation & Intramurals





Vice President for University Advancement

